

# xpoli

3 YEARS WARRANTY



**EN**  
Series of recessed spots, with round or square shape, for LEDs bulbs, PAR16, GU10 socket and LEDs modules XCOMBO, CM06, CM07, CM08, CM10 and CM11.

For installation in plasterboard dropped ceiling, with visible recessed frame or trimless.

Die-cast aluminum housing, electrostatically painted.

Optical system UGR<16.

GU10 ceramic sockets.

**Range of applications**

General lighting for small retail spaces, general interior lighting.

**Lamps and LED modules are not included.**

**RO**  
Serie de spoturi încastrate, cu formă rotundă sau pătrată, pentru becuri cu LED, PAR16, dulie GU10 și module cu LED-uri XCOMBO, CM06, CM07, CM08, CM10 și CM11.

Se montează în tavane din gipscarton și sunt disponibile în două versiuni, cu ramă de încastare sau fără ramă vizibilă.

Corpul din aluminiu turnat sub presiune, vopsit în câmp electrostatic.

Sistem optic UGR<16.

Dulii GU10 din ceramică.

**Aplicații**

Iluminatul general al spațiilor comerciale, iluminatul general de interior.

**Becurile și modulele LED nu sunt incluse.**

**IT**  
Serie di faretti da incasso, tondi o quadrati, per lampadine a LED, PAR16, attacco GU10 e moduli a LED XCOMBO, CM06, CM07, CM08, CM10 e CM11.

Si installano su controsoffitti in cartongesso, con telaio da incasso visibile o a filo, senza rivestimento del bordo del profilo.

Corpo in pressofusione di alluminio, verniciato a polveri.

Sistema ottico UGR<16.

Portalampade GU10 in ceramica.

**Campi di applicazione**

Illuminazione generale di spazi commerciali, illuminazione generale d'interni.

**Lampadine e moduli LED non sono inclusi.**

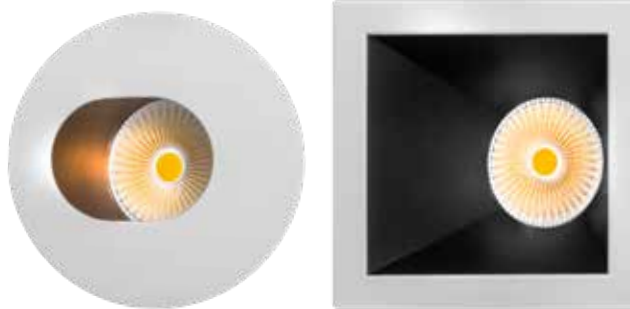
## FIXED SPOTS



## ADJUSTABLE SPOTS



## WALL WASHER SPOTS



## TRIMLESS SPOTS



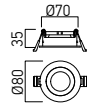
**Recommended bulbs and LED modules**



BX-QPAR16 CM06/07/08 CM10 CM11

### P001 FIXED SPOTS

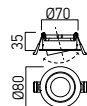
FINISHING AVAILABLE



Code	Finishing	Bulb type	Socket	Power	Input voltage		Weight
P001 MWH/MWH	MWH/MWH	PAR16	GU10	1x50W max.	230V AC	Ø72 mm	0.05 kg
P001 MWH/MBK	MWH/MBK	PAR16	GU10	1x50W max.	230V AC	Ø72 mm	0.05 kg
P001 MWH/SGD	MWH/SGD	PAR16	GU10	1x50W max.	230V AC	Ø72 mm	0.05 kg

### P002 ADJUSTABLE SPOTS

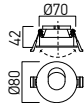
FINISHING AVAILABLE



Code	Finishing	Bulb type	Socket	Power	Input voltage		Weight
P002 MWH/MWH	MWH/MWH	PAR16	GU10	1x50W max.	230V AC	Ø72 mm	0.05 kg
P002 MWH/MBK	MWH/MBK	PAR16	GU10	1x50W max.	230V AC	Ø72 mm	0.05 kg
P002 MWH/SGD	MWH/SGD	PAR16	GU10	1x50W max.	230V AC	Ø72 mm	0.05 kg

**P003 ADJUSTABLE WALL WASHER SPOTS**

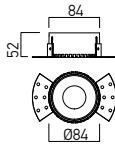
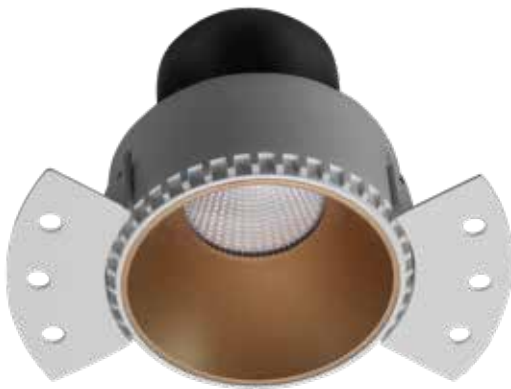
FINISHING AVAILABLE



Code	Finishing	Bulb type	Socket	Power	Input voltage	$\Phi$	Weight
<b>P003 MWH/MWH</b>	MWH/MWH	PAR16	GU10	1x50W max.	230V AC	Ø72 mm	0.05 kg
<b>P003 MWH/MBK</b>	MWH/MBK	PAR16	GU10	1x50W max.	230V AC	Ø72 mm	0.05 kg
<b>P003 MWH/SGD</b>	MWH/SGD	PAR16	GU10	1x50W max.	230V AC	Ø72 mm	0.05 kg

**P006 TRIMLESS SPOTS**

FINISHING AVAILABLE



Code	Finishing	Bulb type	Socket	Power	Input voltage	$\Phi$	Weight
<b>P006 MWH/MWH</b>	MWH/MWH	PAR16	GU10	1x50W max.	230V AC	Ø90 mm	0.12 kg
<b>P006 MWH/MBK</b>	MWH/MBK	PAR16	GU10	1x50W max.	230V AC	Ø90 mm	0.12 kg
<b>P006 MWH/SGD</b>	MWH/SGD	PAR16	GU10	1x50W max.	230V AC	Ø90 mm	0.12 kg

**Recommended bulbs and LED modules**



BX-QPAR16



CM06/07/08



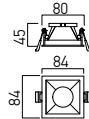
CM10



CM11

**P004 FIXED SPOTS**

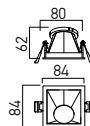
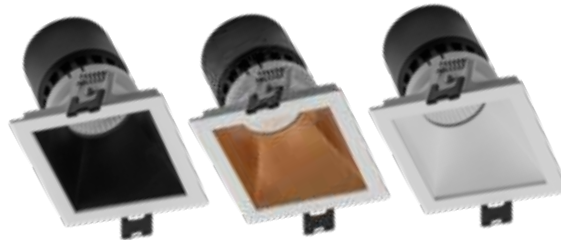
FINISHING AVAILABLE



Code	Finishing	Bulb type	Socket	Power	Input voltage		Weight
<b>P004 MWH/MWH</b>	MWH/MWH	PAR16	GU10	1x50W max.	230V AC	78x78 mm	0.07 kg
<b>P004 MWH/MBK</b>	MWH/MBK	PAR16	GU10	1x50W max.	230V AC	78x78 mm	0.07 kg
<b>P004 MWH/SGD</b>	MWH/SGD	PAR16	GU10	1x50W max.	230V AC	78x78 mm	0.07 kg

**P005 WALL WASHER SPOTS**

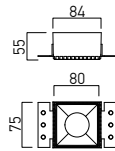
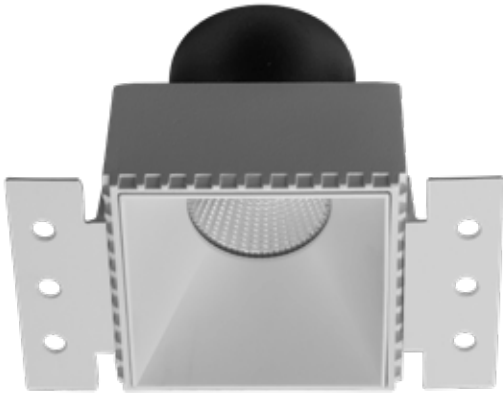
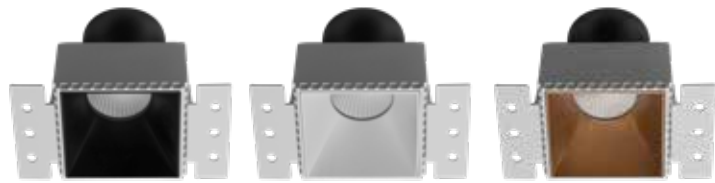
FINISHING AVAILABLE



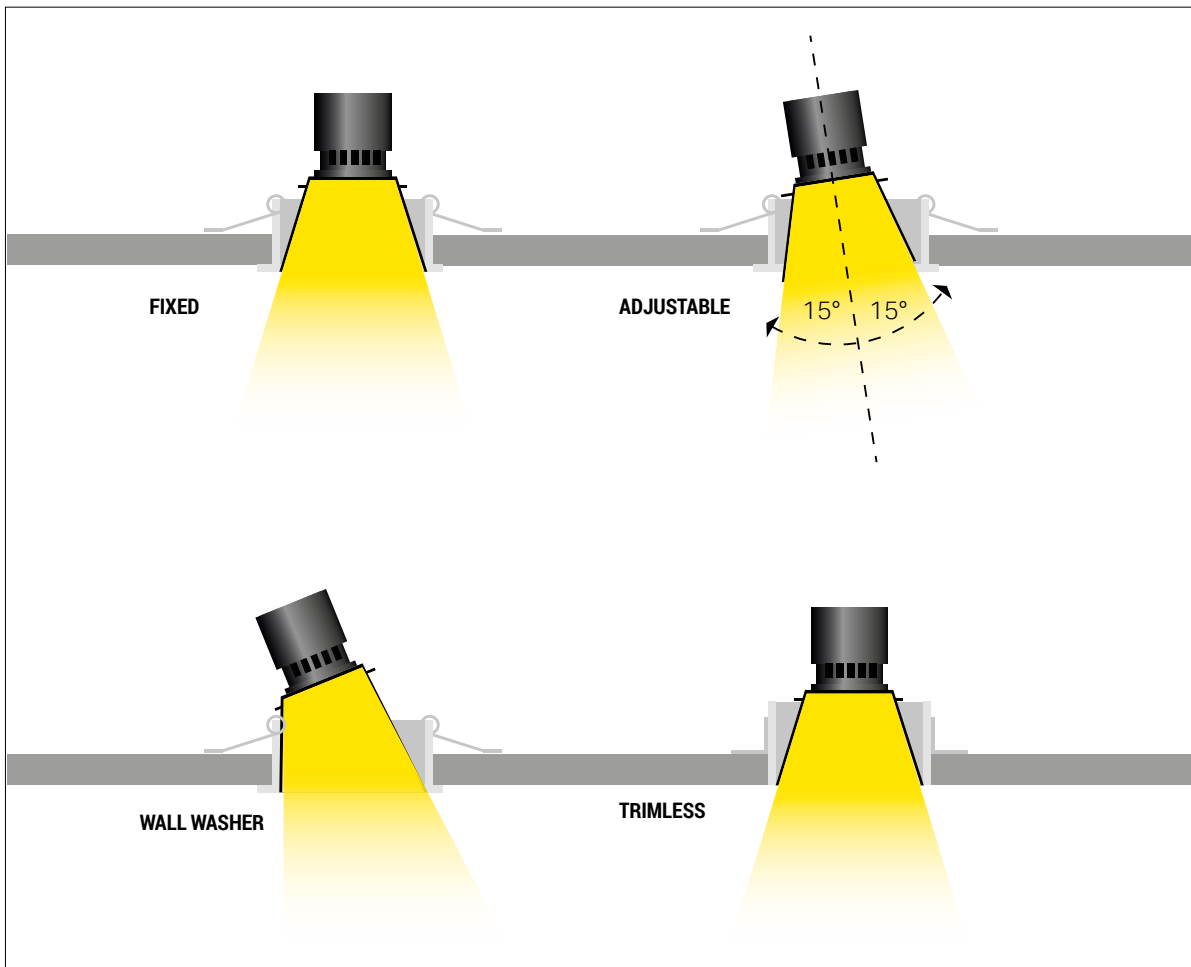
Code	Finishing	Bulb type	Socket	Power	Input voltage		Weight
<b>P005 MWH/MWH</b>	MWH/MWH	PAR16	GU10	1x50W max.	230V AC	78x78 mm	0.07 kg
<b>P005 MWH/MBK</b>	MWH/MBK	PAR16	GU10	1x50W max.	230V AC	78x78 mm	0.07 kg
<b>P005 MWH/SGD</b>	MWH/SGD	PAR16	GU10	1x50W max.	230V AC	78x78 mm	0.07 kg

**P007 TRIMLESS SPOTS**

FINISHING AVAILABLE



Code	Finishing	Bulb type	Socket	Power	Input voltage	Ø	Weight
P007 MWH/MWH	MWH/MWH	PAR16	GU10	1x50W max.	230V AC	85x85 mm	0.12 kg
P007 MWH/MBK	MWH/MBK	PAR16	GU10	1x50W max.	230V AC	85x85 mm	0.12 kg
P007 MWH/SGD	MWH/SGD	PAR16	GU10	1x50W max.	230V AC	85x85 mm	0.12 kg



**Recommended bulbs and LED modules**



BX-QPAR16



CM06/07/08



CM10



CM11

