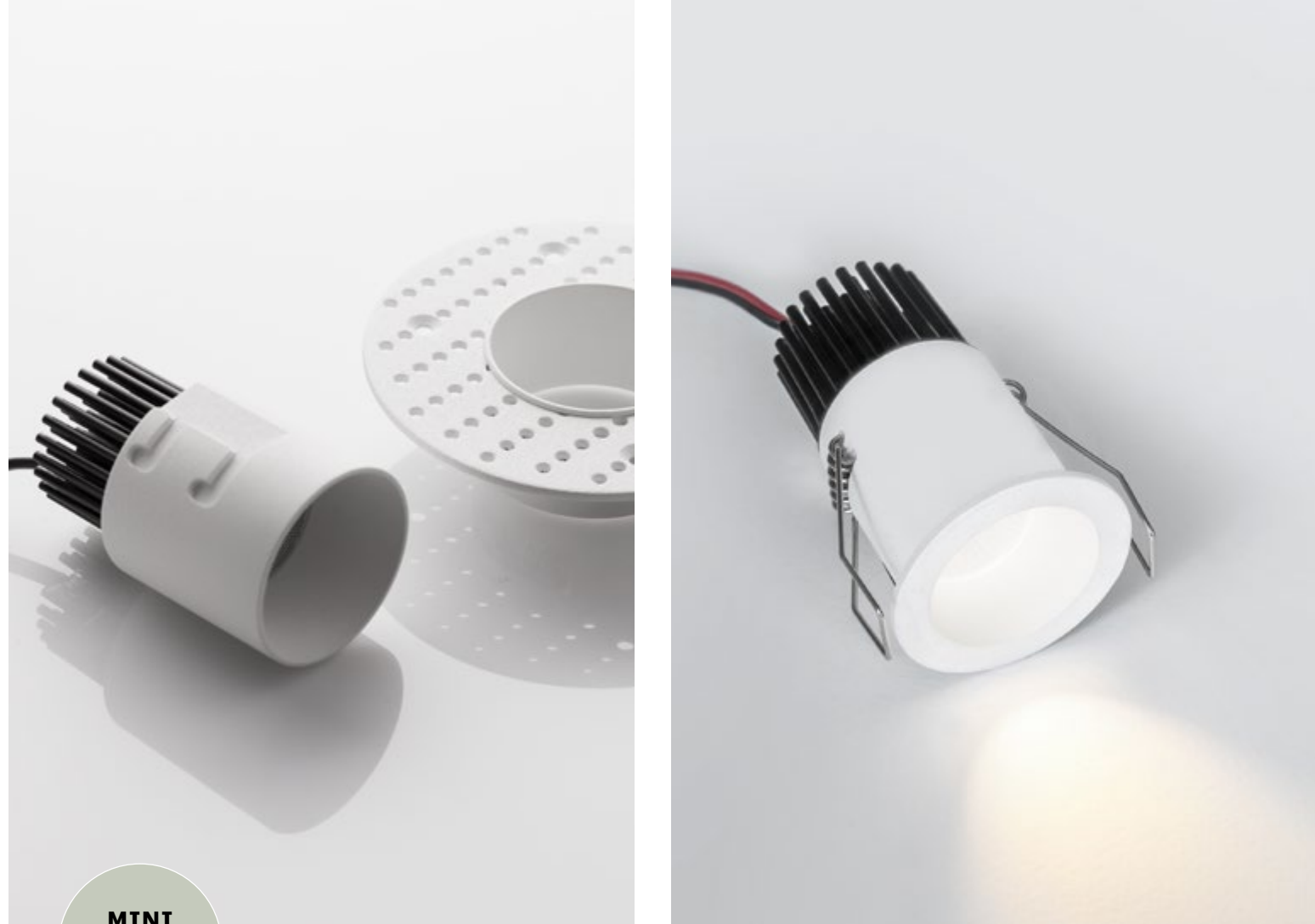


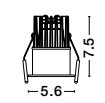
DRIVER INCLUDED



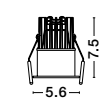
MINI TRIMLESS



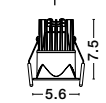
BREE | 9232111



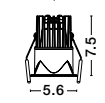
BREE | 9232112



BREE | 9232113



BREE | 9232114

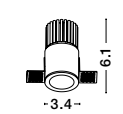


Included Driver 7 Watt Philips
Input: 220-240V AC 50/60Hz
Output: 32-37 VDC
200mA Not Dimmable

Photo	Code	Material	Watt	Volt	Ma	Driver	Lumen	LED Chip	Dimension(cm)	Cut Out(cm)	CRI	UGR	Beam Angle	Kelvin	Protection	Adj.	Driver Included	Class
	9232111	White Aluminium	7W	220-240V	200	Philips	770Lm	Cree	D:5.6 H:7.5	5	>90	>12	24°	3000K	IP32	X	✓	III
	9232112	Black Aluminium	7W	220-240V	200	Philips	770Lm	Cree	D:5.6 H:7.5	5	>90	>12	24°	3000K	IP32	X	✓	III
	9232113	White Aluminium	7W	220-240V	200	Philips	770Lm	Cree	L:5.6 W:5.6H:7.5	5x5	>90	>11	24°	3000K	IP32	X	✓	III
	9232114	Black Aluminium	7W	220-240V	200	Philips	770Lm	Cree	L:5.6 W:5.6H:7.5	5x5	>90	>11	24°	3000K	IP32	X	✓	III



SELENE | 9052015



SELENE | 9052014



DRIVER | 9020172

Driver 6 Watt Eaglerise
Input: 220-240V AC 50/60Hz
Output: 6-12 VDC
500mA Not Dimmable

Photo	Code	Material	Watt	Volt	Ma	LED Chip	Dimension(cm)	Lumen	CRI	UGR	Cut Out(cm)	Beam Angle	Kelvin	Protection	Adj.	Driver Included	Class
	9052015	White Aluminium	5W	10V	500	Trimless Luminus	D:3.4 H:6.1	350Lm	>90	>17	4.5	40°	3000K	IP20	X	X	III
	9052014	White Aluminium	5W	10V	500	Luminus	D:4 H:6.4	350Lm	>90	>23	3.5	40°	3000K	IP20	X	X	III

DON'T FORGET TO CONNECT THEM WITH DRIVER | code: 9020172

