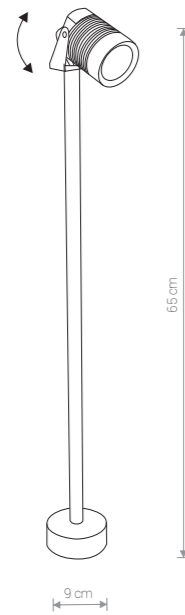


SPIKE LED 9098 BL

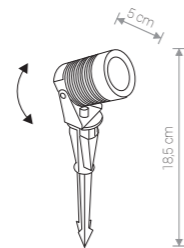


SPIKE LED

aluminium / aluminium / алюминий

9098 ● BL

SPIKE LED 9100 BL

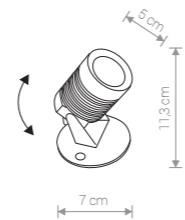


SPIKE LED

aluminium / aluminium / алюминий

9100 ● BL

SPIKE LED 9101 BL



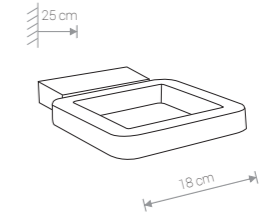
SPIKE LED

aluminium / aluminium / алюминий

9101 ● BL



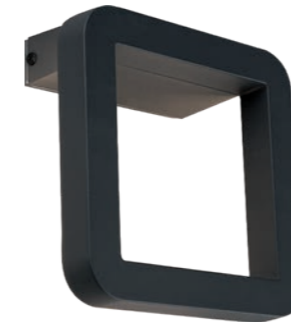
THIKA LED 9120 BL



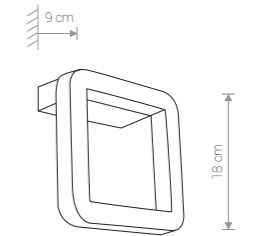
THIKA LED

aluminium, szklo / aluminium, glass / алюминий, стекло

9120 ● BL



THIKA LED 9121 BL



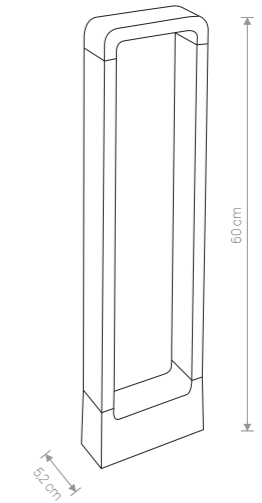
THIKA LED

aluminium, szklo / aluminium, glass / алюминий, стекло

9121 ● BL



THIKA LED 9118 BL



THIKA LED

aluminium, szklo / aluminium, glass / алюминий, стекло

9118 ● BL

Item No.	POWER	COLOUR TEMP.	LUMINOUS FLUX	BEAM ANGLE	COLOUR RENDERING INDEX (CRI >)	INPUT	SAFETY TYPE	POWER FACTOR	INGRESS PROTECTION	LIFETIME
9101	3W LED	3000K	115 lm	35°	80	~220-240V, 50Hz	⊕	0,55	IP 54	10 000 h
9100	3W LED	3000K	115 lm	35°	80	~220-240V, 50Hz	⊕	0,55	IP 54	10 000 h
9098	3W LED	3000K	115 lm	35°	80	~220-240V, 50Hz	⊕	0,55	IP 54	10 000 h

Item No.	POWER	COLOUR TEMP.	LUMINOUS FLUX	BEAM ANGLE	COLOUR RENDERING INDEX (CRI >)	INPUT	SAFETY TYPE	POWER FACTOR	INGRESS PROTECTION	LIFETIME
9121	10W LED	3000K	996 lm	110°	80	~220-240V, 50Hz	⊕	0,9	IP 54	20 000 h
9120	15W LED	3000K	1035 lm	110°	80	~220-240V, 50Hz	⊕	0,9	IP 54	20 000 h
9118	9W LED	3000K	520 lm	39°	80	~220-240V, 50Hz	⊕	0,5	IP 54	20 000 h