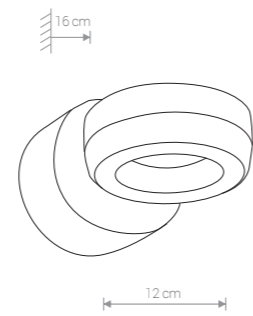




**DONUT LED** 9116 BL



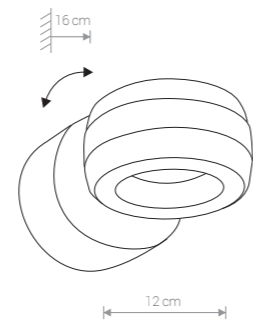
**DONUT LED**

aluminium / aluminium / алюминий

9116 ● BL



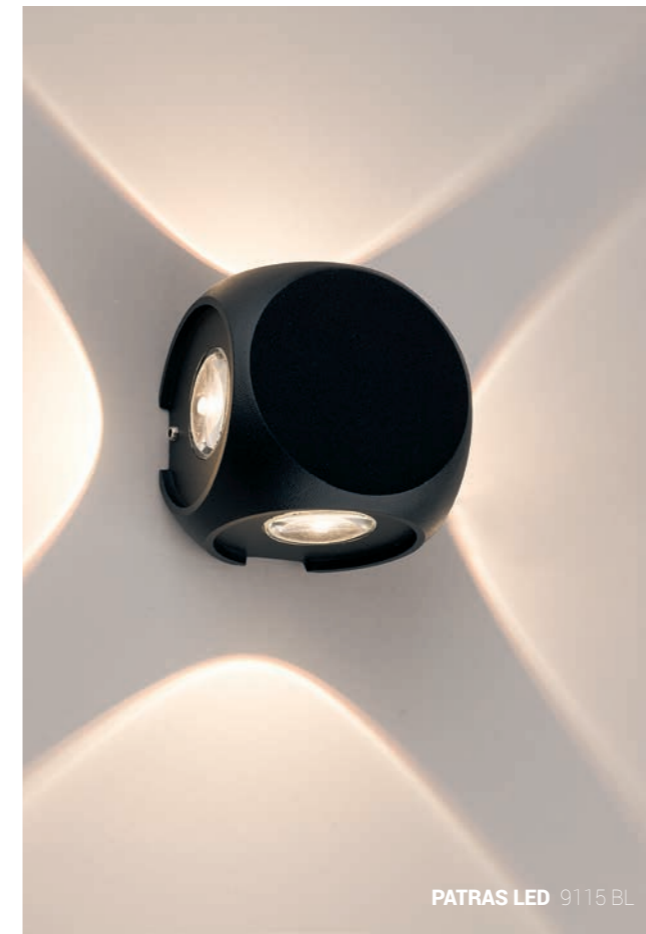
**DONUT LED** 9117 BL



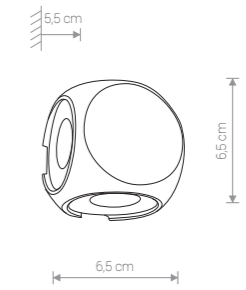
**DONUT LED**

aluminium / aluminium / алюминий

9117 ● BL



**PATRAS LED** 9115 BL



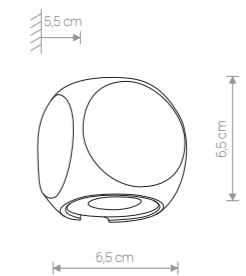
**PATRAS LED**

aluminium / aluminium / алюминий

9115 ● BL



**ARGOS LED** 9114 WH



**ARGOS LED**

aluminium / aluminium / алюминий

9114 ○ WH

Item No.	POWER	COLOUR TEMP.	LUMINOUS FLUX	BEAM ANGLE	COLOUR RENDERING INDEX (CRI >=)	INPUT	SAFETY TYPE	POWER FACTOR	INGRESS PROTECTION	LIFETIME
9116	6W LED	3000K	271 lm	110°	80	~200-240V, 50Hz	⊕	0,5	IP 54	20 000 h
9117	2x6W LED	3000K	636 lm	110°	80	~200-240V, 50Hz	⊕	0,5	IP 54	20 000 h

Item No.	POWER	COLOUR TEMP.	LUMINOUS FLUX	BEAM ANGLE	COLOUR RENDERING INDEX (CRI >=)	INPUT	SAFETY TYPE	POWER FACTOR	INGRESS PROTECTION	LIFETIME
9115	4x1W LED	3000K	255 lm	38°	80	~220-240V, 50Hz	⊕	0,55	IP 54	10 000 h
9114	2x2W LED	3000K	280 lm	47°	80	~220-240V, 50Hz	⊕	0,55	IP 54	10 000 h