

02 Recessed Spots Fixed LED&gt;The LED Glass Range

10106G/W



6W LED Glass range recessed spot IP20.

Requires 350mA driver.

Complies with standard EN60598-1 and any other specific standards.



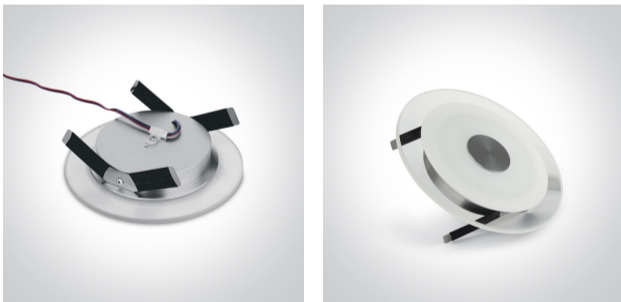
## Downloads



## Dimensions



## Gallery



## Must be ordered separately



89008

## Physical Specification

|                      |                             |
|----------------------|-----------------------------|
| Item Group           | 02 Recessed Spots Fixed LED |
| Family               | The LED Glass Range         |
| Order Code           | 10106G/W                    |
| Material             | Acrylic                     |
| Shape                | Circular                    |
| Height               | 26mm                        |
| Diameter             | 150mm                       |
| Cutout Hole Diameter | 100mm                       |
| Recessed Ceiling     | Yes                         |
| Depth Required       | 60mm                        |
| Indoor               | Yes                         |
| Adjustable           | No                          |

## Electrical Characteristics

## Fitting

|               |   |
|---------------|---|
| Input Type    | Constant Current  |
| Input Current | 350mA   |
| Safety Class  |  |
| Power(Watts)  | 6W  |
| IP Rating     | IP20  |
| Light Source  | LED built in  |
| LED Number    | 6   |
| Cable Length  | 40cm  |
| F Mark        |  |

## Illumination Data

|                    |       |
|--------------------|-------|
| Colour Temperature | 3000K |
| Lumen Output       | 205lm |

Light Efficiency

34,17lm/W

Завантажено з e27.com.ua

Illumination Diagram



## Packing Info

Pcs/Carton

32

Barcode

5291889026518

HS Code

9405409900

## Certification & Warranty

Warranty

3 Years

Weee Directive

Yes

switch to  
**one light!**

one  
LIGHT

