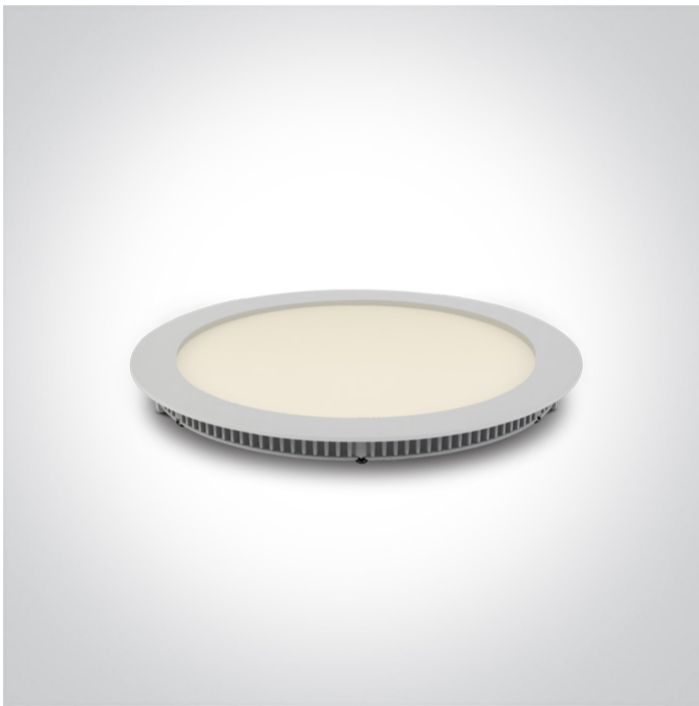


06 Downlights Fixed LED&gt;The 18-30W Round Recessed Panels Die cast

**10118FA/W/D**

18W slim downlight LED, IP40, ideal for commercial applications such as offices, galleries and showrooms.

Supplied with 450mA non-dimmable LED driver.

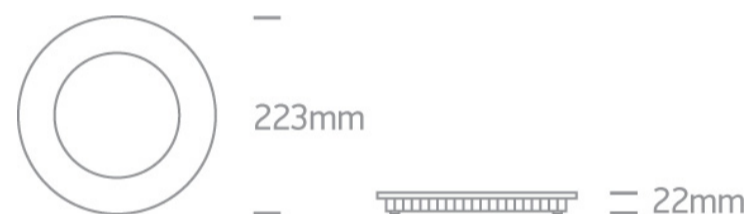
Complies with standard EN60598-1 and any other specific standards.



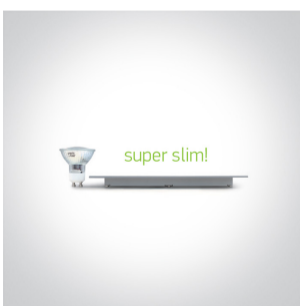
## Downloads



## Dimensions



## Gallery



## Related items



89024UT

## Physical Specification

Item Group

06 Downlights Fixed LED

Family

The 18-30W Round Recessed Panels Die cast

Order Code

10118FA/W/D

Завантажено з e27.com.ua

Colour

White

Material

Die Cast

Diffuser Material

Acrylic

Shape

Circular

Height

22mm

Diameter

223mm

Cutout Hole Diameter

210mm

Recessed Ceiling

Yes

Depth Required

50mm

Indoor

Yes

Adjustable

No

#### Electrical Characteristics

Gear

External-Included

Fitting + Driver

Input Voltage

220-240V

50 Hz

Yes

60 Hz

Yes

Safety Class



Power(Watts)

18W

IP Rating

IP40

Light Source

LED built in

Dimmable

No

F Mark



Fitting

Input Type

Constant Current

Input Current

450mA

Voltage

38V



Safety Class	III
Power(Watts)	17,1W
IP Rating	IP40
Light Source	LED built in
LED Type	SMD 2835
LED Brand	Epistar
LED Number	96

## Gear

Gear Type	Led Driver
Input Voltage	220-240V
50 Hz	Yes
60 Hz	Yes
Power(Watts)	12,1-19W
Power Factor	0,9
Constant Current	Yes
450mA	27-42V
IP Rating	IP20
Safety Class	
Dimmable	No
Ambient Temp	50°C
Operating Temp	75°C
Housing Material	Plastic
Brand	Lifud

## Illumination Data

Colour Temperature	6000K
Lumen Output	1260lm
Light Efficiency	70lm/W
CRI	80
Beam Angle	120°



## Packing Info

Box Length	28cm
Box Width	23,5cm
Box Height	3,5cm
Box Weight	0,575Kg
Pcs/Carton	20
Barcode	5291889042778
HS Code	9405109890

## Certification &amp; Warranty

Warranty	2 Years
Average Lifetime	30000 hours
Weee Directive	Yes

switch to  
**one light!**

one  
LIGHT

