

## 06 Downlights Fixed LED>Round Downlights

## 10120/W



20W LED recessed downlight with interchangeable rings, IP44.  
Ideal for general lighting applications.

Rings must be order separately.

Complete with 500mA driver.

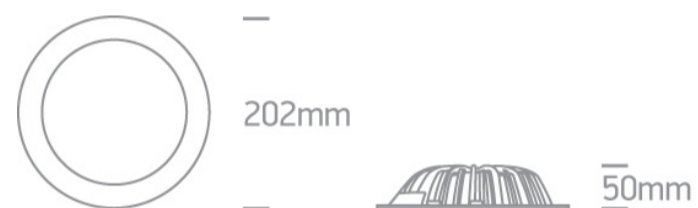
Complies with standard EN60598-1 and any other specific standards.



### Downloads



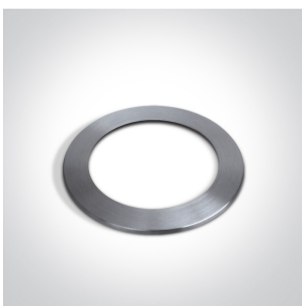
### Dimensions



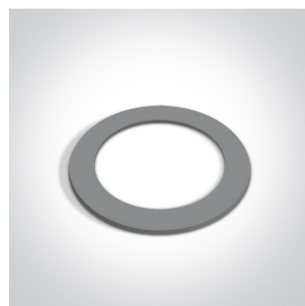
### Gallery



### Must be ordered separately



10100/AL



10100/G





10100/W

## Physical Specification



Item Group	06 Downlights Fixed LED
Family	Round Downlights
Order Code	10120/W
Material	Aluminium
Shape	Circular
Height	50mm
Diameter	202mm
Cutout Hole Diameter	180mm
Recessed Ceiling	Yes
Depth Required	70mm
Indoor	Yes
Adjustable	No

## Electrical Characteristics


Gear	External-Included
Fitting + Driver	
Input Voltage	220-240V
50 Hz	Yes
60 Hz	Yes
Safety Class	
Power(Watts)	20W
IP Rating	IP44
Light Source	LED built in
Dimmable	No
F Mark	

## Fitting

Input Type	Constant Current
Input Current	500mA

Voltage	38V
Safety Class	
Power(Watts)	19W
IP Rating	IP44
Light Source	LED built in
LED Brand	Epistar
F Mark	

## Gear

Gear Type	Led Driver
Input Voltage	220-240V
50 Hz	Yes
60 Hz	Yes
Power(Watts)	13,5-21W
Power Factor	0,9
Constant Current	Yes
500mA	27-42V
IP Rating	IP20
Safety Class	
Dimmable	No
Ambient Temp	45°C
Operating Temp	85°C
Housing Material	Plastic
Output Terminal	Cable
Brand	Lifud

## Illumination Data

Colour Temperature	3000K
Lumen Output	1800lm
Light Efficiency	90lm/W
CRI	75

Beam Angle

110°

Завантажено з e27.com.ua

Illumination Diagram



## Packing Info

Box Length

23,5cm

Box Width

7,5cm

Box Height

21,5cm

Box Weight

1,03Kg

Pcs/Carton

10

Barcode

5291889032120

HS Code

9405409900

## Certification & Warranty

Warranty

2 Years

Weee Directive

Yes

switch to  
**one light!**

one  
LIGHT

