

06 Downlights Fixed LED&gt;The Dark Light Dome Reflector Die cast

10122FD/W/C



22W LED Dark Light Dome Reflector, IP20.

Complete with 600mA driver.

Complies with standard EN60598-1 and any other specific standards.



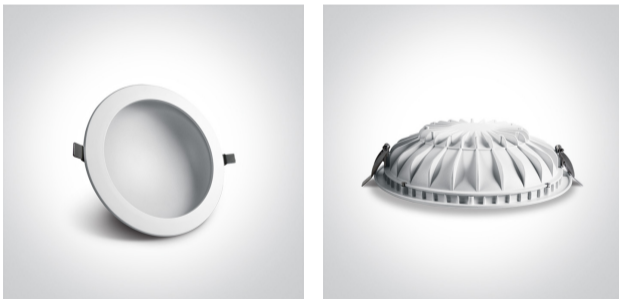
## Downloads



## Dimensions



## Gallery



## Physical Specification

Item Group

06 Downlights Fixed LED

Family

The Dark Light Dome Reflector Die cast

Order Code

10122FD/W/C

Colour

White

Material

Die Cast

Shape



Circular


Height

60mm


Diameter	225mm
Cutout Hole Diameter	210mm
Recessed Ceiling	Yes
Depth Required	90mm
Indoor	Yes
Adjustable	No

## Electrical Characteristics

Gear	External-Included
Fitting + Driver	
Input Voltage	220-240V
50 Hz	Yes
60 Hz	Yes
Safety Class	
Power(Watts)	22W
IP Rating	IP20
Light Source	LED built in
Dimmable	No
F Mark	

Fitting	
Input Type	Constant Current
Input Current	600mA
Voltage	35V
Safety Class	
Power(Watts)	21W
IP Rating	IP20
Light Source	LED built in
LED Type	SMD 2835
LED Brand	Sanan

## Gear

Gear Type	Led Driver
Input Voltage	220-240V
50 Hz	Yes
60 Hz	Yes
Power(Watts)	15-21W
Power Factor	0,9
Constant Current	Yes
600mA	25-35V
IP Rating	IP20
Safety Class	
Dimmable	No
Housing Material	Plastic
Output Terminal	Cable
Brand	Kegu
Protection	Short Circuit and Overload

## Illumination Data

Colour Temperature	4000K
Lumen Output	1550lm
Light Efficiency	70,45lm/W
CRI	80
Illumination Diagram	
Dark Light	Yes

## Packing Info

Box Length	23,5cm
Box Width	23cm

Box Height	6,5cm
Box Weight	0,58Kg
Pcs/Carton	20
Barcode	5291889051633
HS Code	9405409900

#### Certification & Warranty

Warranty	2 Years
Average Lifetime	30000hrs
Weee Directive	Yes

switch to  
**one light!**

one  
LIGHT

