

06 Downlights Fixed LED&gt;The Budget Downlight Range Aluminium

**10124T/W/W**

24W SMD LED recessed downlight, budget range, IP20.

Complete with 600mA driver.

Complies with standard EN60598-1 and any other specific standards.



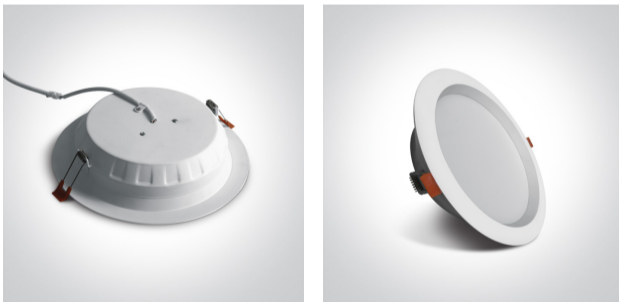
## Downloads



## Dimensions



## Gallery



## Physical Specification

Item Group

06 Downlights Fixed LED

Family

The Budget Downlight Range Aluminium

Order Code

10124T/W/W

Colour

White

Material

Aluminium

Shape



Circular


Height

55mm

Diameter	235mm
Cutout Hole Diameter	210mm
Recessed Ceiling	Yes
Depth Required	75mm
Indoor	Yes
Adjustable	No

## Electrical Characteristics

Gear	External-Included
Fitting + Driver	
Input Voltage	220-240V
50 Hz	Yes
60 Hz	Yes
Safety Class	
Power(Watts)	24W
IP Rating	IP20
Light Source	LED built in
Dimmable	No
F Mark	

Fitting	
Input Type	Constant Current
Input Current	600mA
Voltage	36V
Safety Class	
Power(Watts)	21,6W
IP Rating	IP20
Light Source	LED built in
LED Type	SMD 2835
LED Brand	Sanan

LED Number

48

Завантажено з e27.com.ua

F Mark



## Gear

Gear Type

Led Driver

Input Voltage

220-240V

50 Hz

Yes

60 Hz

Yes

Power(Watts)

14,5-23,2W

Power Factor

0,95

Constant Current

Yes

600mA

25-42V

IP Rating

IP20

Safety Class



Dimmable

No

Housing Material

Plastic

Output Terminal

Cable

Brand

Kegu

## Illumination Data

Colour Temperature

3000K

Lumen Output

1700lm

Light Efficiency

70,83lm/W

CRI

80

Beam Angle

120°

Illumination Diagram



## Packing Info

Box Length

24,5cm

Box Width

24,5cm

Box Height	6cm
Box Weight	0,64kg
Pcs/Carton	20
Barcode	5291889045816
HS Code	9405409900

#### Certification & Warranty

Warranty	2 Years
Weee Directive	Yes

switch to  
**one light!**

one  
LIGHT

