

# INSTALLATION MANUAL

## 10150T

**ecodownlight**



**DARK LIGHT**

**90 CRI**

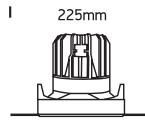


1050mA/38W | 1400mA/50W | IP20 | Die cast

Requires 1050mA/1400mA driver.



155mm



225mm

145mm



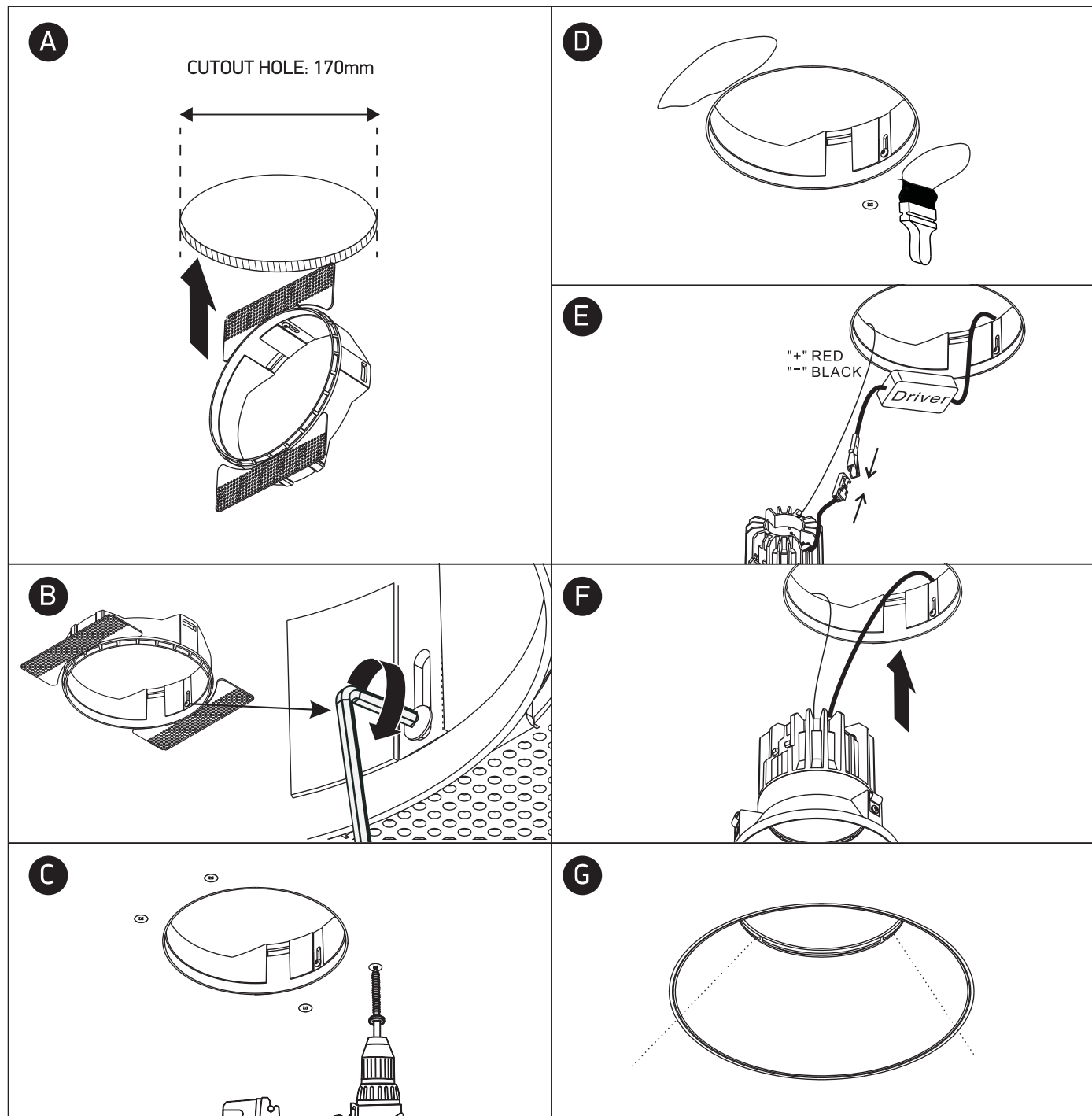
170mm

160mm



50cm

**one**  
LIGHT



### Warnings:

1. Make sure that the product is installed properly before connecting to electricity.
2. Do not cover the fitting.
3. Maintenance and installation should only be carried out by a professional electrician.