

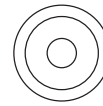
INSTALLATION MANUAL

11103P

ecolight



DARK
LIGHT
ADJUSTABLE



55mm



47mm



60mm



35mm

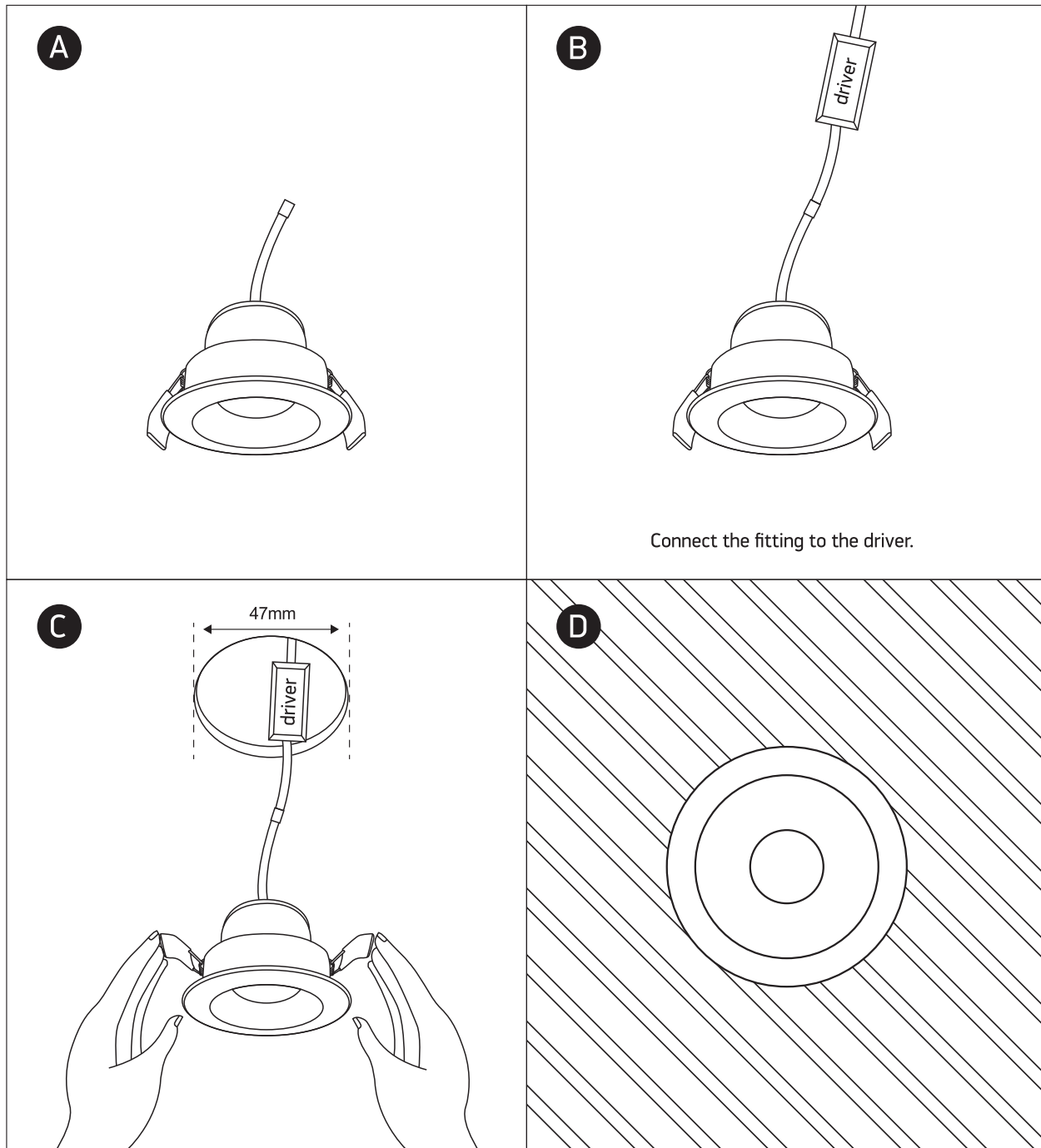
40cm



350mA | 3W | IP44 | Aluminium | Adjustable
Requires 350mA driver.



80
CRI



Warnings:

1. Make sure that the product is installed properly before connecting to electricity.
2. Do not cover the fitting.
3. Maintenance and installation should only be carried out by a professional electrician.