

INSTALLATION MANUAL

11110GT1



210mm

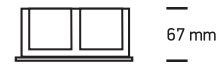
12V | R111 | G53 | 75W | IP20 | Gypsum | Adjustable



212mm

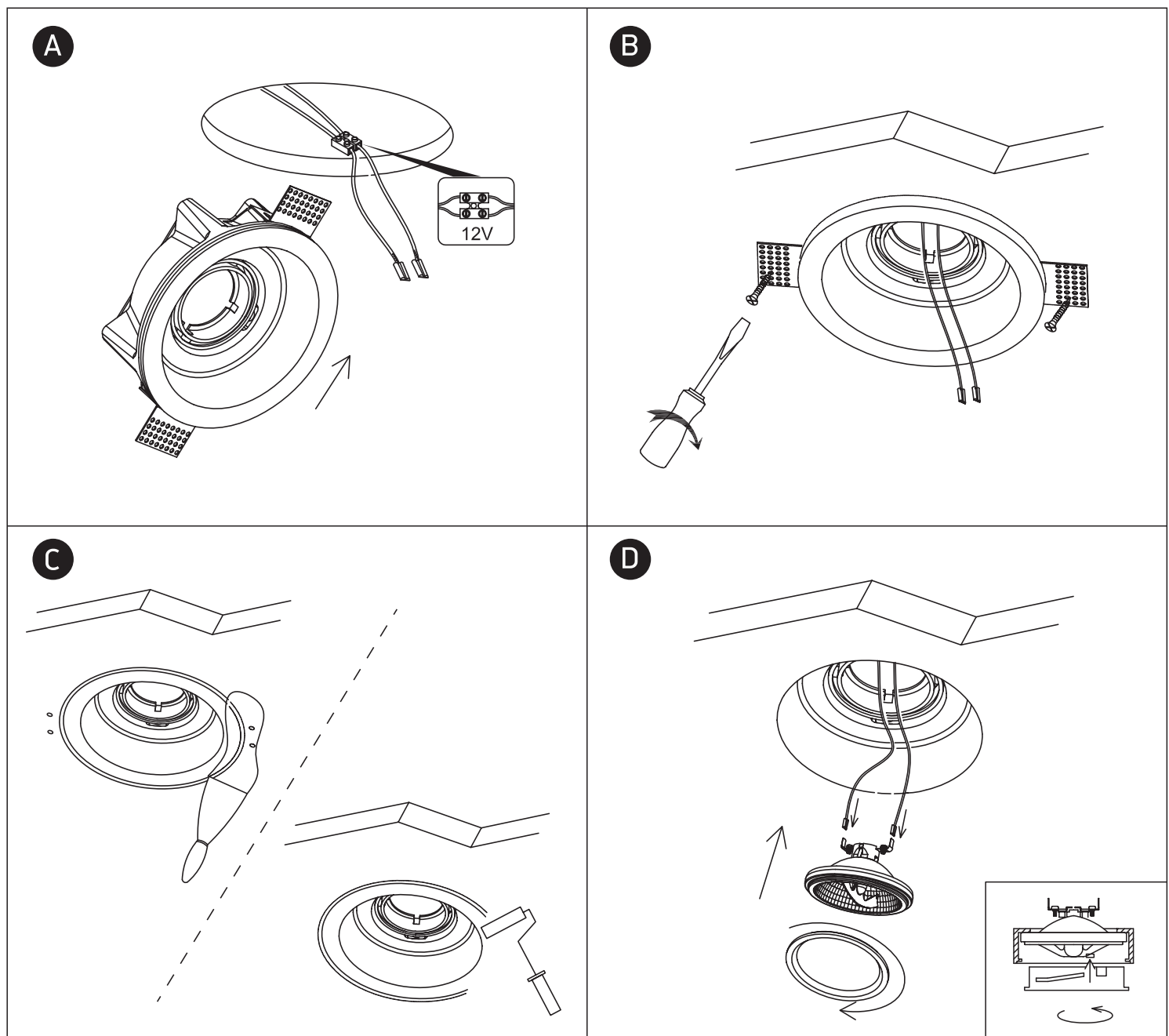
170mm

25cm



67mm

one
LIGHT



Warnings:

1. Make sure that the product is installed properly before connecting to electricity.
2. Do not cover the fitting.
3. Maintenance and installation should only be carried out by a professional electrician.