

INSTALLATION MANUAL

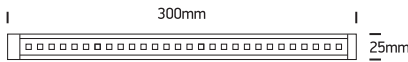
38103, 38105, 38110

LEDstrips

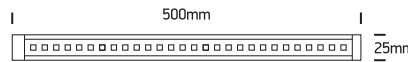


one
LIGHT

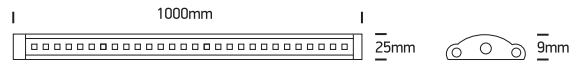
24V DC | 3W | IP20 | Aluminium + PC



24V DC | 5W | IP20 | Aluminium + PC



24V DC | 10W | IP20 | Aluminium + PC



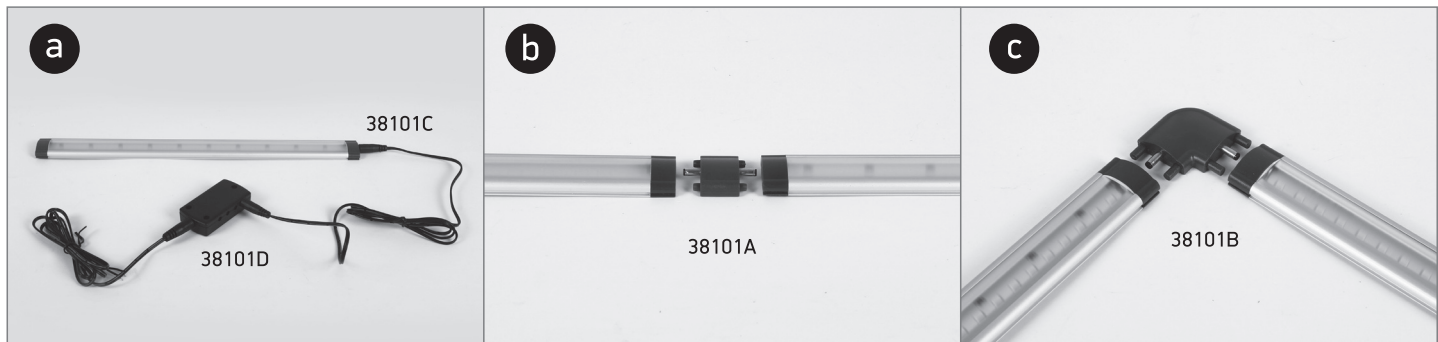
INSTALLATION

To install the LED shelf system use double face adhesive tape. Ensure the mounting surface is clean, dry and free from dust.

CONNECTION

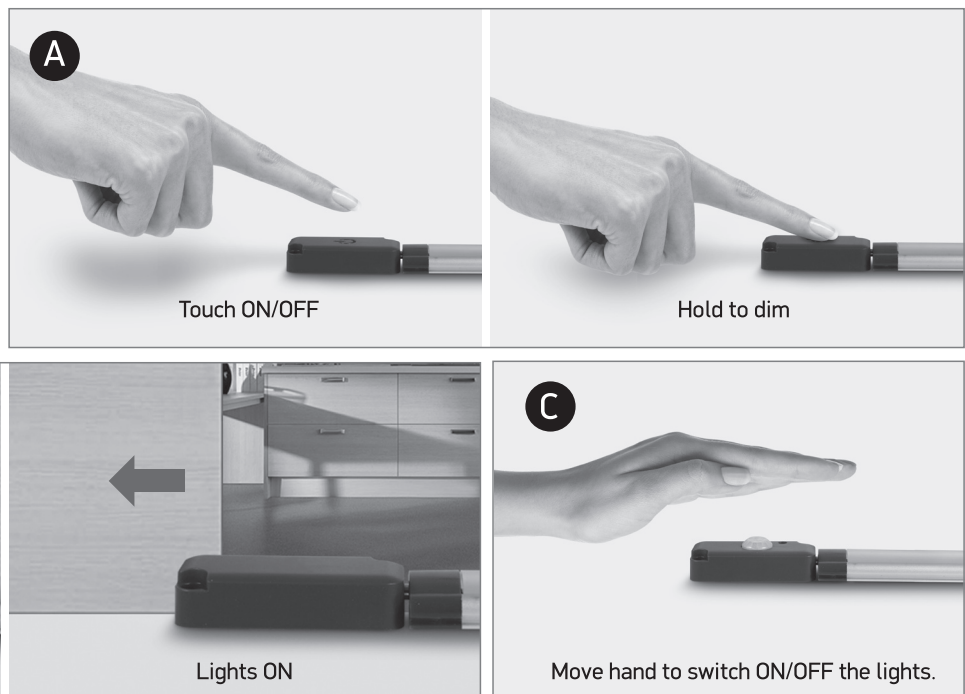
a) To connect the LED shelf system use 38101C connector. Cut one end and connect to the LED driver's output. Ensure that the polarity is correct (black/white "+", black "-"). Connect the other end of the cable connector to the LED shelf system. Alternatively, use 38101C cable connector and 38101D connection box (photo a).

b) To connect multiple LED lights together (2 meters maximum each line) use 38101A connector (photo b) or 38101B corner (photo c).



EXTENDED ACCESSORIES

- A. 38102A - TOUCH ON/OFF AND DIMMER
- B. 38102B - WAVE HAND / DOOR ON/OFF
- C. 38102C - PIR SENSOR



Warnings:

1. Make sure that the product is installed properly before connecting to electricity.
2. Do not cover the fitting.
3. Maintenance and installation should only be carried out by a professional electrician.