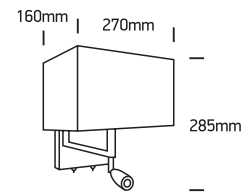


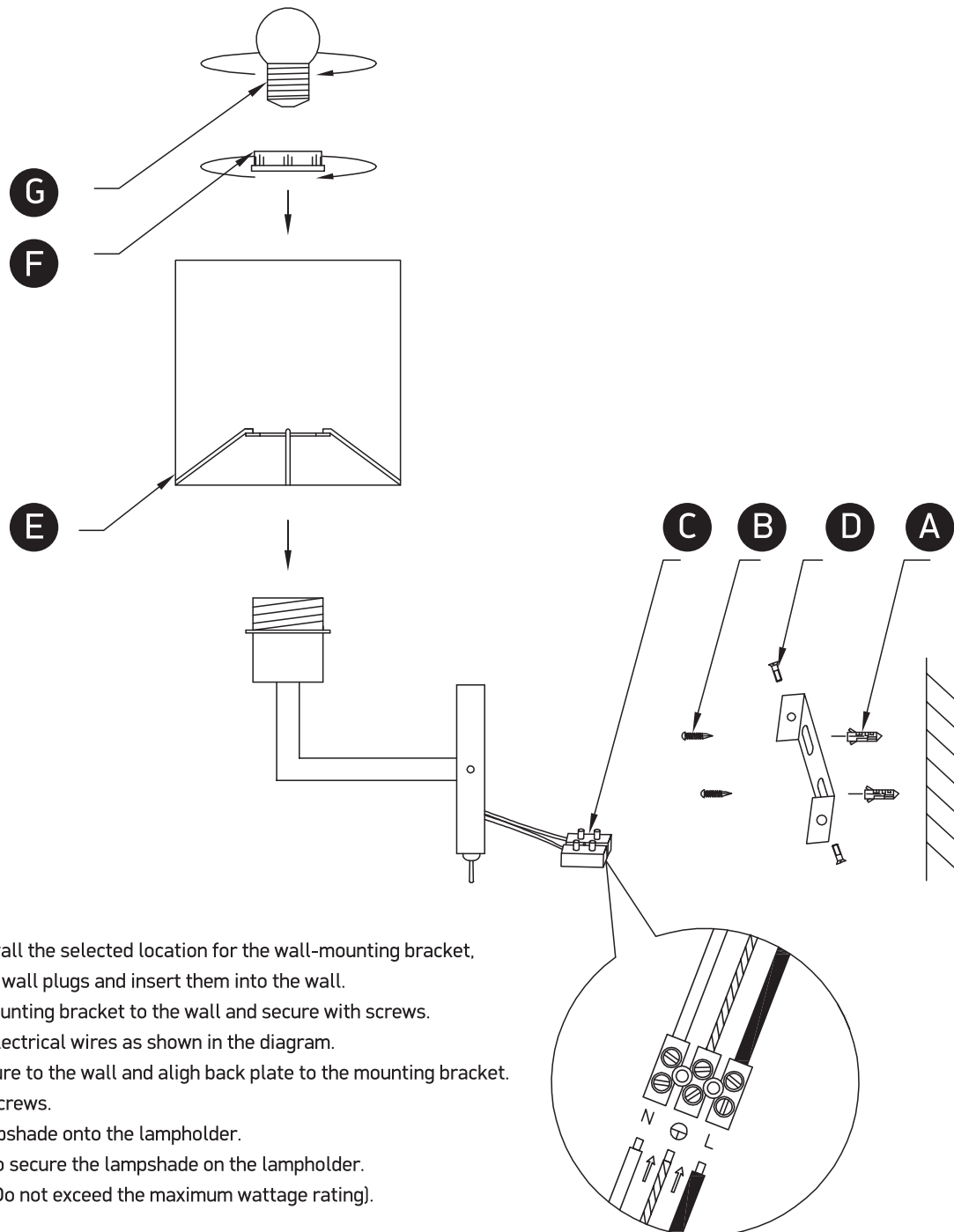
INSTALLATION MANUAL

61044

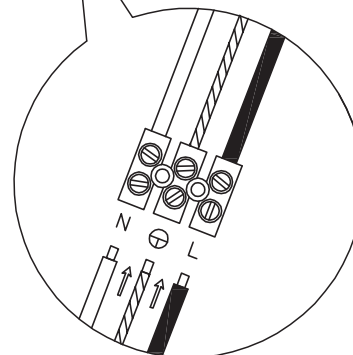
ecolight



3W LED + 40W E27 | 100-240V | IP20 | Metal + white fabric shade | Adjustable
Complete with driver



- A. Mark on the wall the selected location for the wall-mounting bracket, drill holes for wall plugs and insert them into the wall.
- B. Attach the mounting bracket to the wall and secure with screws.
- C. Connect the electrical wires as shown in the diagram.
- D. Place the fixture to the wall and align back plate to the mounting bracket. Secure with screws.
- E. Place the lampshade onto the lampholder.
- F. Use the ring to secure the lampshade on the lampholder.
- G. Install lamp (Do not exceed the maximum wattage rating).



Warnings:

1. Make sure that the product is installed properly before connecting to electricity.
2. Do not cover the fitting.
3. Maintenance and installation should only be carried out by a professional electrician.