

21 Industrial &amp; Floodlights&gt;The IP65 LED Connectable Range Double

38236LC/D



36W IP65 slim LED connectable fitting .

Stainless steel clips included.

Polycarbonate body and diffuser.

Supplied with non-dimmable LED driver.

Complies with standard EN60598-1 and any other specific standards.



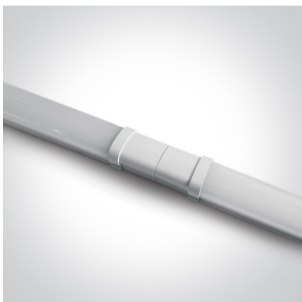
## Downloads



## Dimensions



## Gallery



## Must be ordered separately




050084

## Physical Specification

Item Group	21 Industrial & Floodlights
Family	The IP65 LED Connectable Range Double
Order Code	38236LC/D
Colour	White
Material	PC
Diffuser Material	PC
Shape	Rectangular
Length	1275mm
Width	40mm
Height	79mm
Surface Ceiling	Yes
Surface Wall	Yes
Indoor	Yes
Outdoor	Yes
Adjustable	No
IK Rating	8

## Electrical Characteristics

Gear	Built In
Fitting + Driver	
Input Voltage	100-240V
50 Hz	Yes
60 Hz	Yes
Safety Class	
Power(Watts)	36W
IP Rating	IP65
Light Source	LED built in
Dimmable	No

Cable Length

50cm

Завантажено з e27.com.ua

F Mark



### Fitting

Input Type

Constant Current

Power(Watts)

36W

IP Rating

IP65

Light Source

LED built in

LED Type

SMD 2835

LED Brand

Sanan

### Gear

Gear Type

Led Driver

Input Voltage

100-240V

50 Hz

Yes

60 Hz

Yes

Power(Watts)

36W

Power Factor

0,9

Constant Current

Yes

IP Rating

IP20

Safety Class



Dimmable

No

Housing Material

Plastic

Output Terminal

Connector

Brand

Eaglerise

### Illumination Data

Colour Temperature

6000K

Lumen Output

3100lm

Light Efficiency

86,1lm/W

CRI

80

Beam Angle

120°

Завантажено з e27.com.ua

Illumination Diagram



## Packing Info

Pcs/Carton

20

Barcode

5291889061663

HS Code

9405104090

## Certification & Warranty

Warranty

2 Years

Weee Directive

Yes

switch to  
**one light!**

one  
LIGHT

