

## 04 Recessed Spots Adjustable LED>The 7W COB Range

### 51107/AL/W



7W LED adjustable recessed spot, IP20.

Requires 700mA driver.

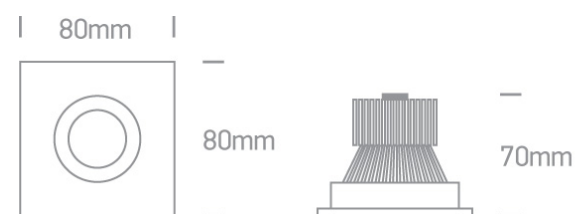
Complies with standard EN60598-1 and any other specific standards.



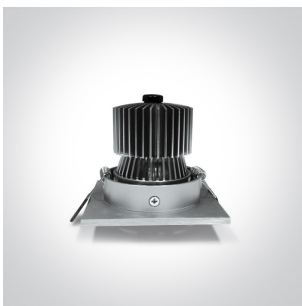
#### Downloads



#### Dimensions



#### Gallery



#### Must be ordered separately





89015A


## Physical Specification

Item Group	04 Recessed Spots Adjustable LED
Family	The 7W COB Range
Order Code	51107/AL/W
Colour	Aluminium
Material	Aluminium
Shape	Circular
Height	80mm
Diameter	80mm
Cutout Hole Diameter	70mm
Recessed Ceiling	Yes
Depth Required	90mm
Indoor	Yes
Adjustable	1 Direction

## Electrical Characteristics

## Fitting

Input Type	Constant Current
Input Current	700mA
Safety Class	
Power(Watts)	7W
IP Rating	IP20
Light Source	LED built in
LED Type	COB
LED Brand	Edison
LED Number	1
Cable Length	40cm
F Mark	

Colour Temperature	3000K
Lumen Output	513lm
Light Efficiency	73,28lm/W
CRI	80
Beam Angle	30°
Illumination Diagram	

## Packing Info

Box Length	11cm
Box Width	11cm
Box Height	8,5cm
Box Weight	0,24Kg
Pcs/Carton	30
Barcode	5291889036340
HS Code	9405409900

## Certification &amp; Warranty

Warranty	2 Years
Weee Directive	Yes

switch to  
**one light!**

one  
LIGHT

