

07 Downlights Adjustable LED>The COB Square Downlights Die cast

51120B/W/W



20W COB LED Recessed adjustable downlight, COB square range, IP20.

Supplied with non-dimmable LED driver.

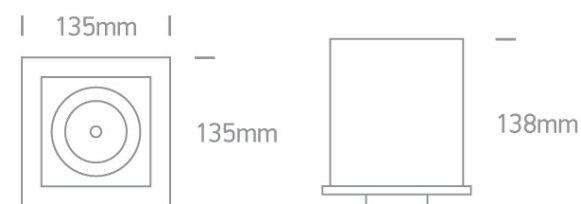
Complies with standard EN60598-1 and any other specific standards.



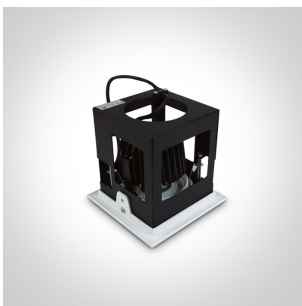
Downloads



Dimensions



Gallery



Physical Specification

Item Group

07 Downlights Adjustable LED

Family

The COB Square Downlights Die cast

Order Code

51120B/W/W

Colour

White

Material

Die Cast

Shape



Rectangular


Length

135mm

Width	135mm
Height	138mm
Cutout Hole Width	125mm
Cutout Hole Length	125mm
Recessed Ceiling	Yes
Depth Required	160mm
Indoor	Yes
Adjustable	2 Directions

Electrical Characteristics

Gear	External-Included
Fitting + Driver	
Input Voltage	220-240V
50 Hz	Yes
60 Hz	Yes
Safety Class	
Power(Watts)	20W
IP Rating	IP20
Light Source	LED built in
Dimmable	No
F Mark	

Fitting	
Input Type	Constant Current
Input Current	500mA
Voltage	37,3V
Safety Class	
Power(Watts)	18,65W
IP Rating	IP20
Light Source	LED built in

LED Type

COB

Завантажено з e27.com.ua

LED Brand

Citizen

Gear

Gear Type

Led Driver

Input Voltage

220-240V

50 Hz

Yes

60 Hz

Yes

Power(Watts)

13,5-21W

Power Factor

0,9

Constant Current

Yes

500mA

27-42V

IP Rating

IP20

Safety Class



Dimmable

No

Housing Material

Plastic

Illumination Data

Colour Temperature

3000K

Lumen Output

1500lm

Light Efficiency

75lm/W

CRI

80

Beam Angle

36°

Illumination Diagram



Packing Info

Box Weight

1,15kg

Pcs/Carton

12

Barcode

5291889044789

HS Code

9405409900

Certification & Warranty

Warranty

3 Years

Weee Directive

Yes

switch to
one light!

one
LIGHT

