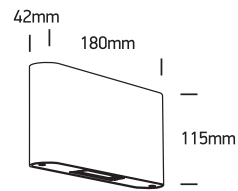


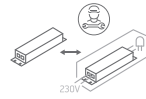
INSTALLATION MANUAL

67412

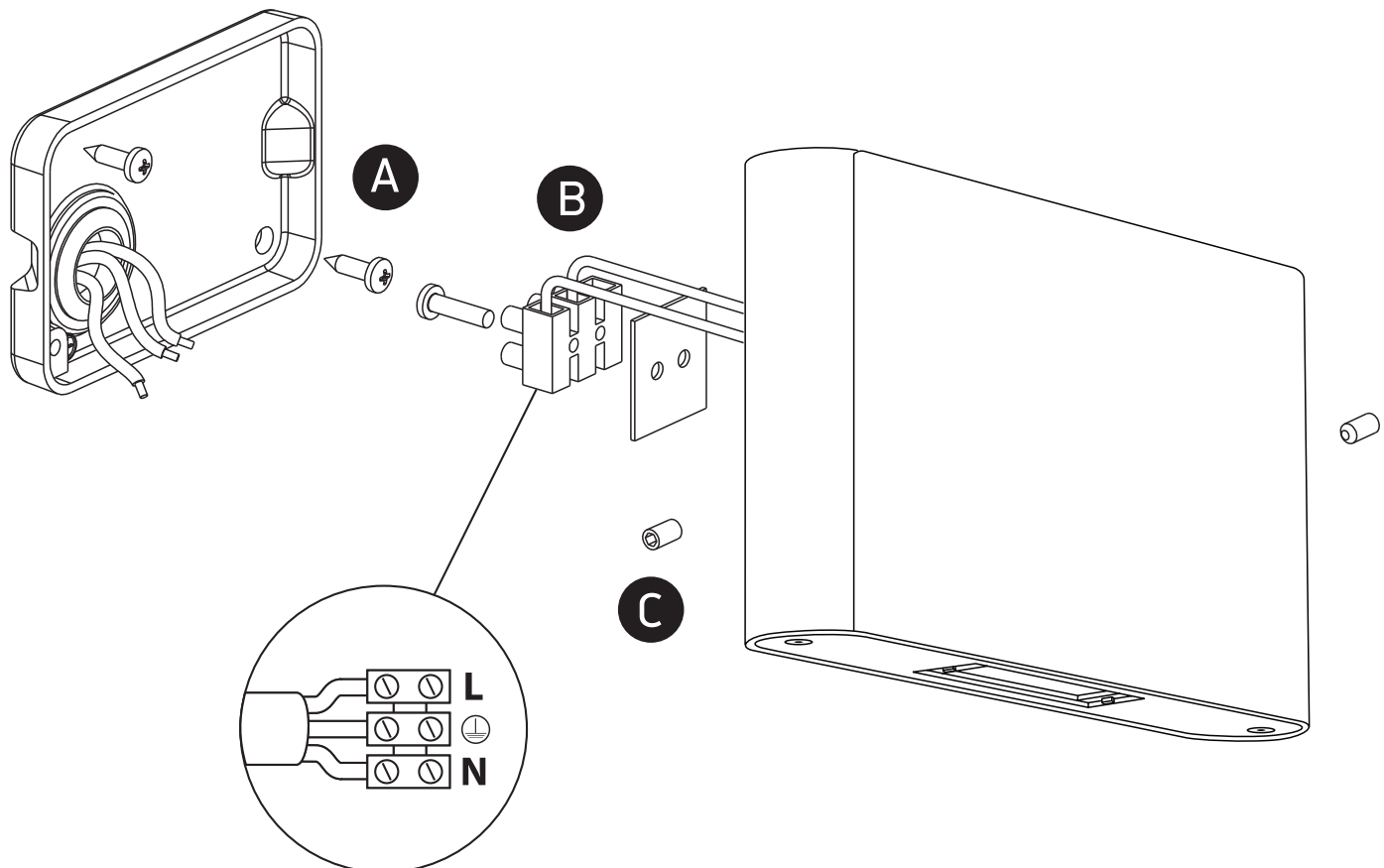
ecolight



230V | 2x6W | IP54 | Adjustable beams | Die cast
Complete with 500mA driver.



**80
CRI**



Warnings:

1. Make sure that the product is installed properly before connecting to electricity.
2. Do not cover the fitting.
3. Maintenance and installation should only be carried out by a professional electrician.