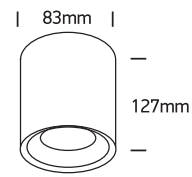


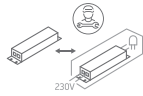
INSTALLATION MANUAL

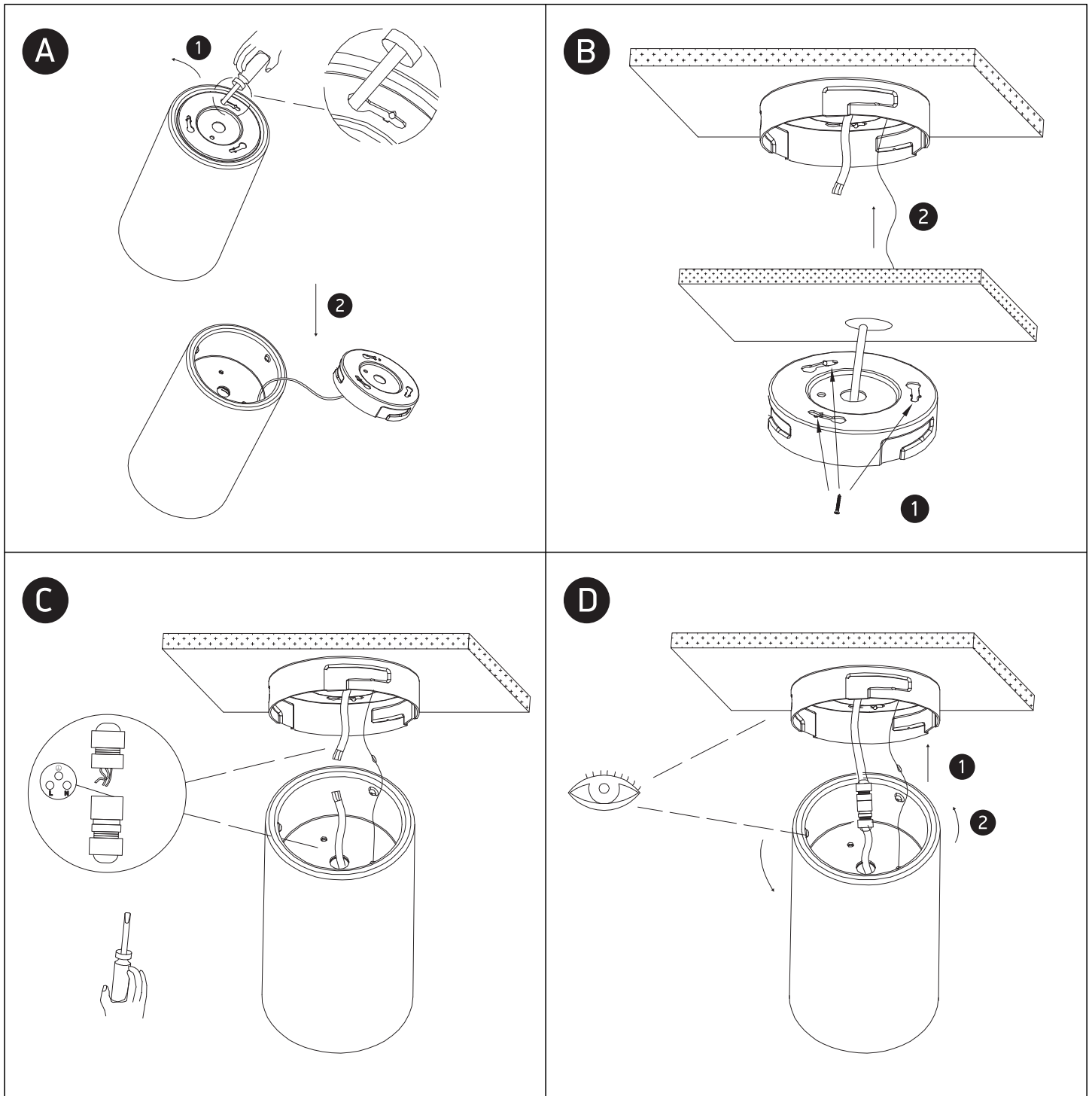
67516A

ecolight


230V | COB LED | 15W | IP65 | Aluminium

Complete with 350mA driver.


 90
CRI

one
LIGHT


Warnings:

1. Make sure that the product is installed properly before connecting to electricity.
2. Do not cover the fitting.
3. Maintenance and installation should only be carried out by a professional electrician.