

# INSTALLATION MANUAL

68068A

**ecolight**

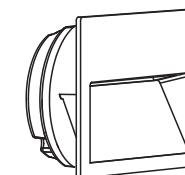


DARK  
LIGHT

80  
CRI



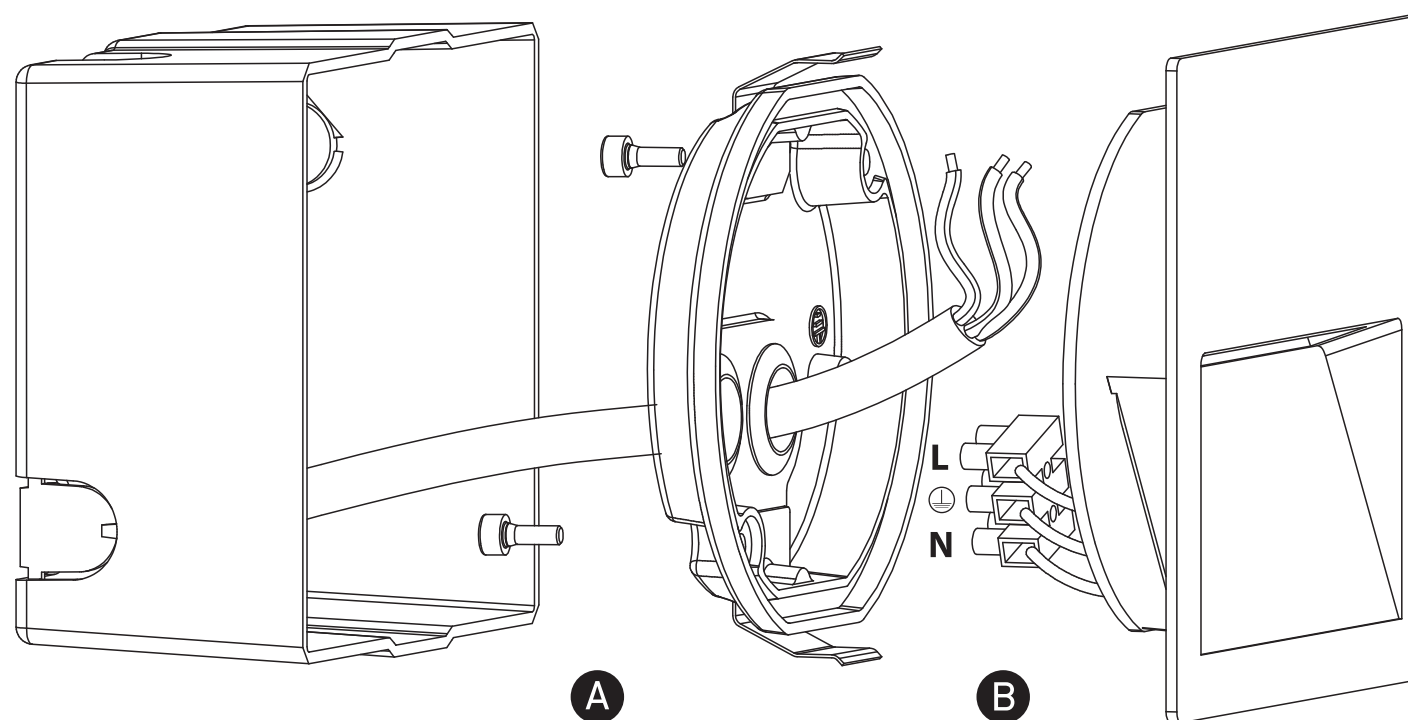
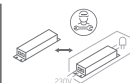
135mm



115x  
115mm

100-240V | SMD 2835 | 4W | IP65 | Die cast

Complete with 350mA driver.  
Supplied with box for concrete installation.



## Warnings:

1. Make sure that the product is installed properly before connecting to electricity.
2. Do not cover the fitting.
3. Maintenance and installation should only be carried out by a professional electrician.