

INSTALLATION MANUAL

68070

LED
BUILT IN

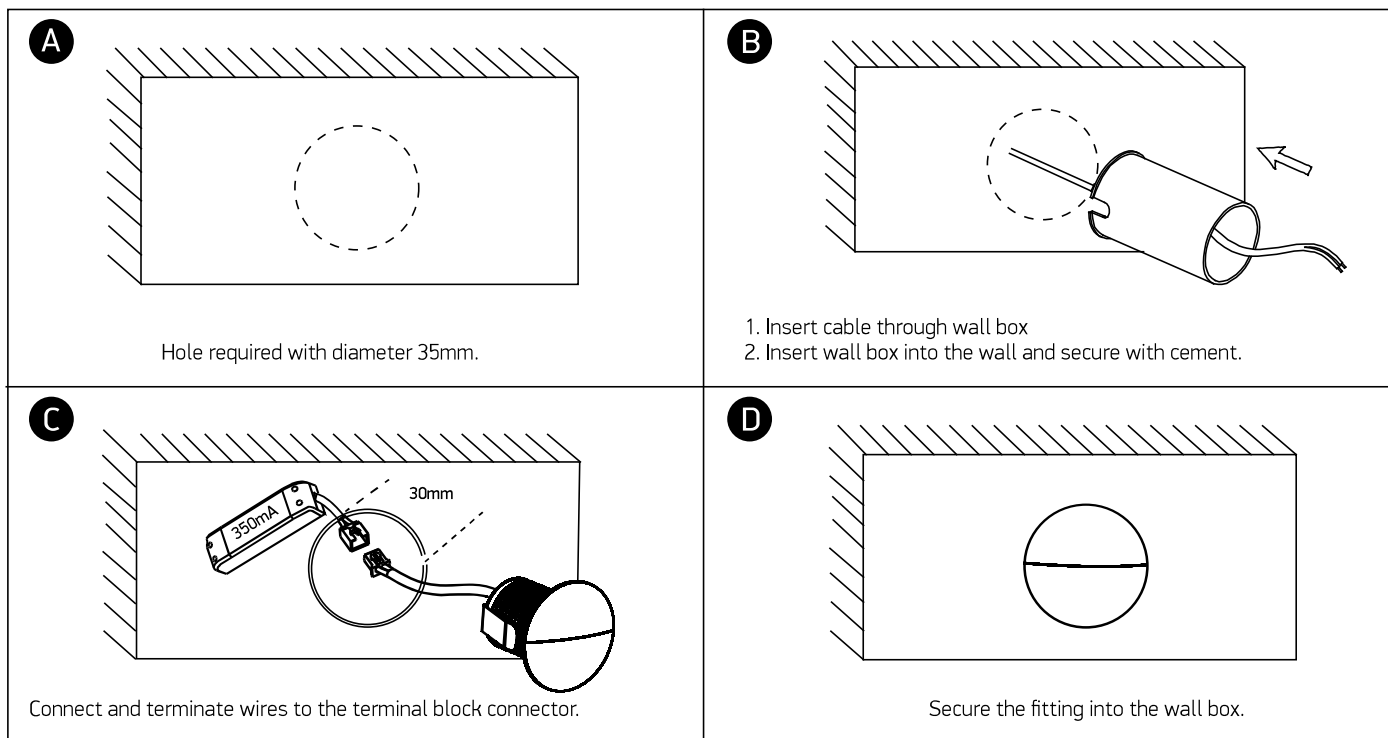
42mm

350mA | 1W | IP65 | Aluminium
Requires 350mA driver.

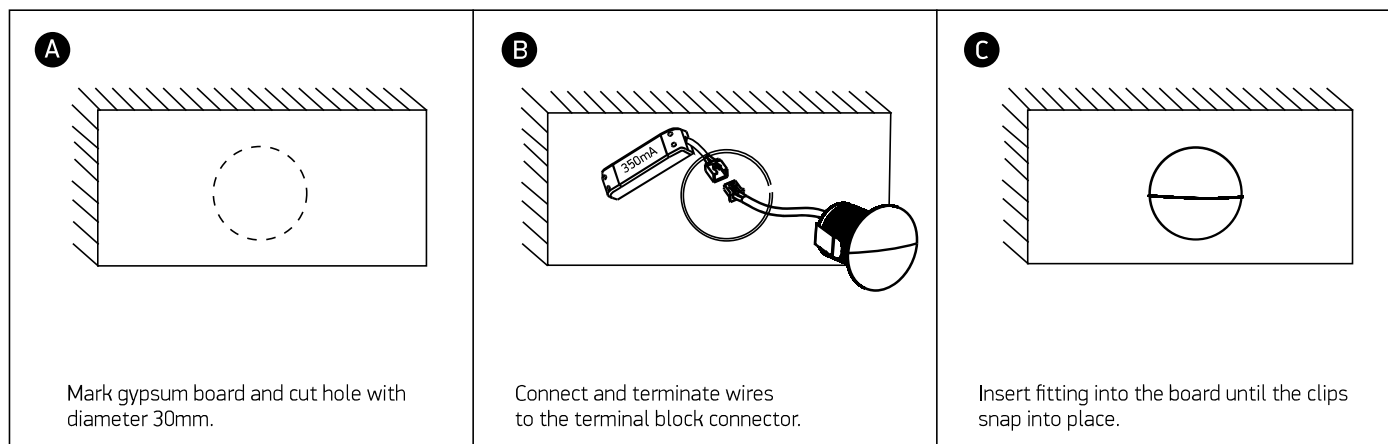


one
LIGHT

FOR CONCRETE INSTALLATION



FOR GYPSUM INSTALLATION



Warnings:

1. Make sure that the product is installed properly before connecting to electricity.
2. Do not cover the fitting.
3. Maintenance and installation should only be carried out by a professional electrician.