

# INSTALLATION MANUAL

68070

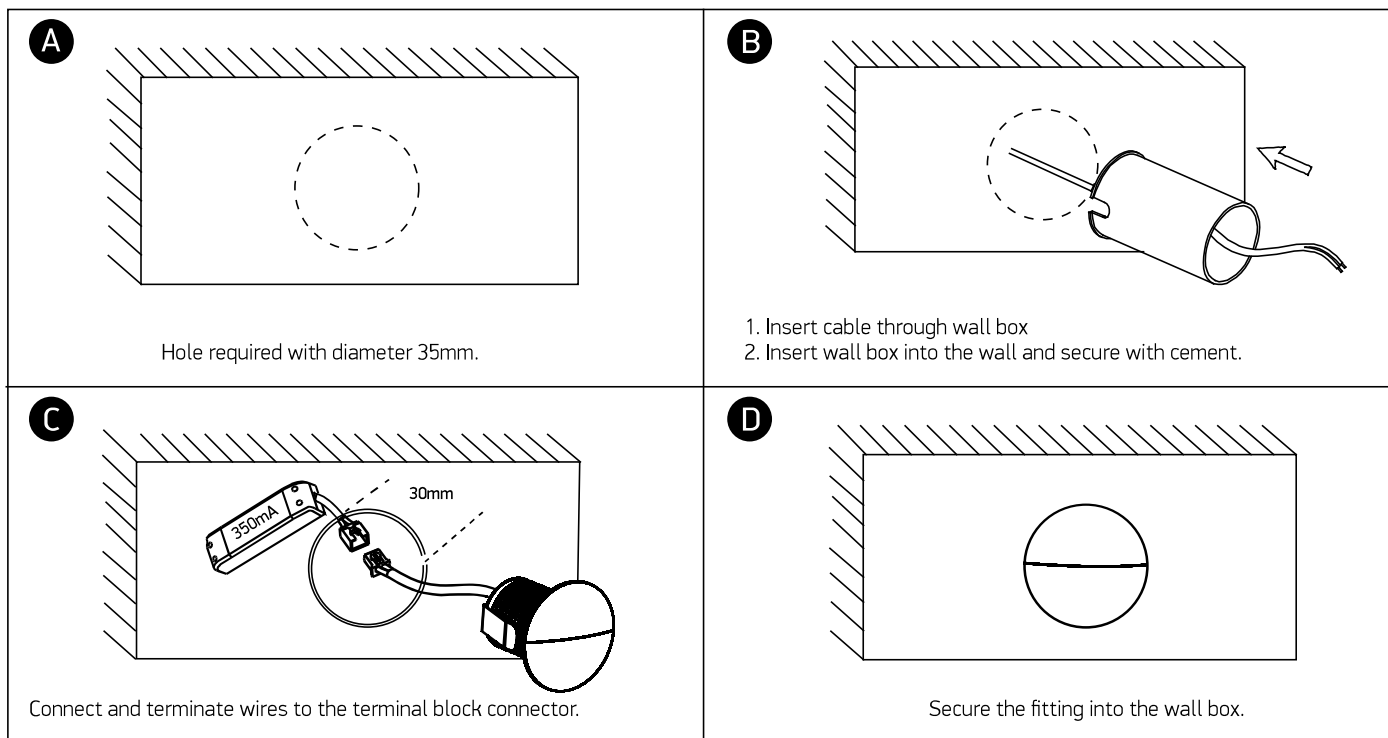
LED  
BUILT IN

350mA | 1W | IP65 | Aluminium  
Requires 350mA driver.

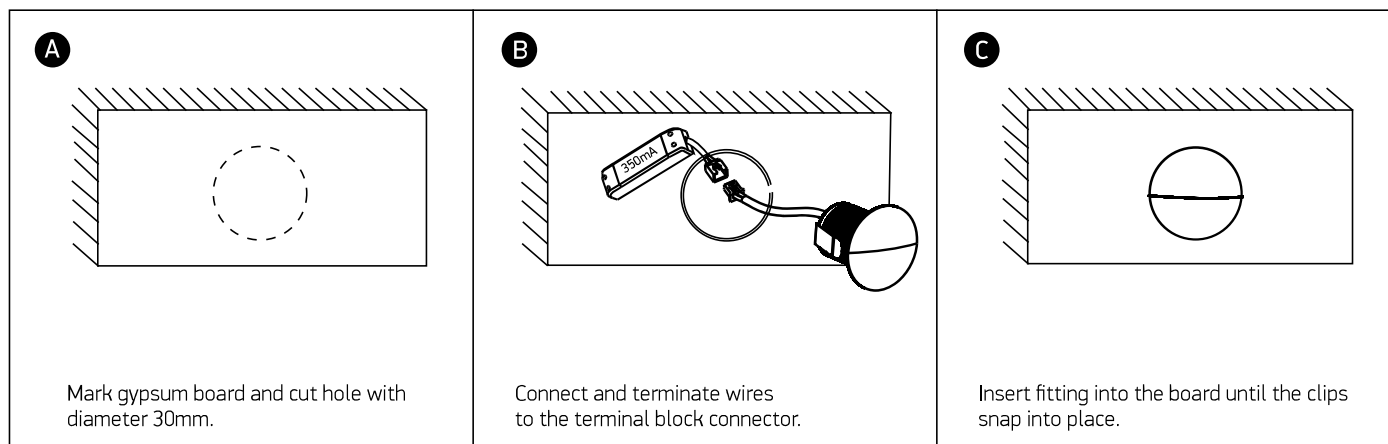


one  
LIGHT

## FOR CONCRETE INSTALLATION



## FOR GYPSUM INSTALLATION



### Warnings:

1. Make sure that the product is installed properly before connecting to electricity.
2. Do not cover the fitting.
3. Maintenance and installation should only be carried out by a professional electrician.