

INSTALLATION MANUAL

7008A



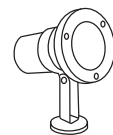
ADJUSTABLE



200cm



| 82mm |

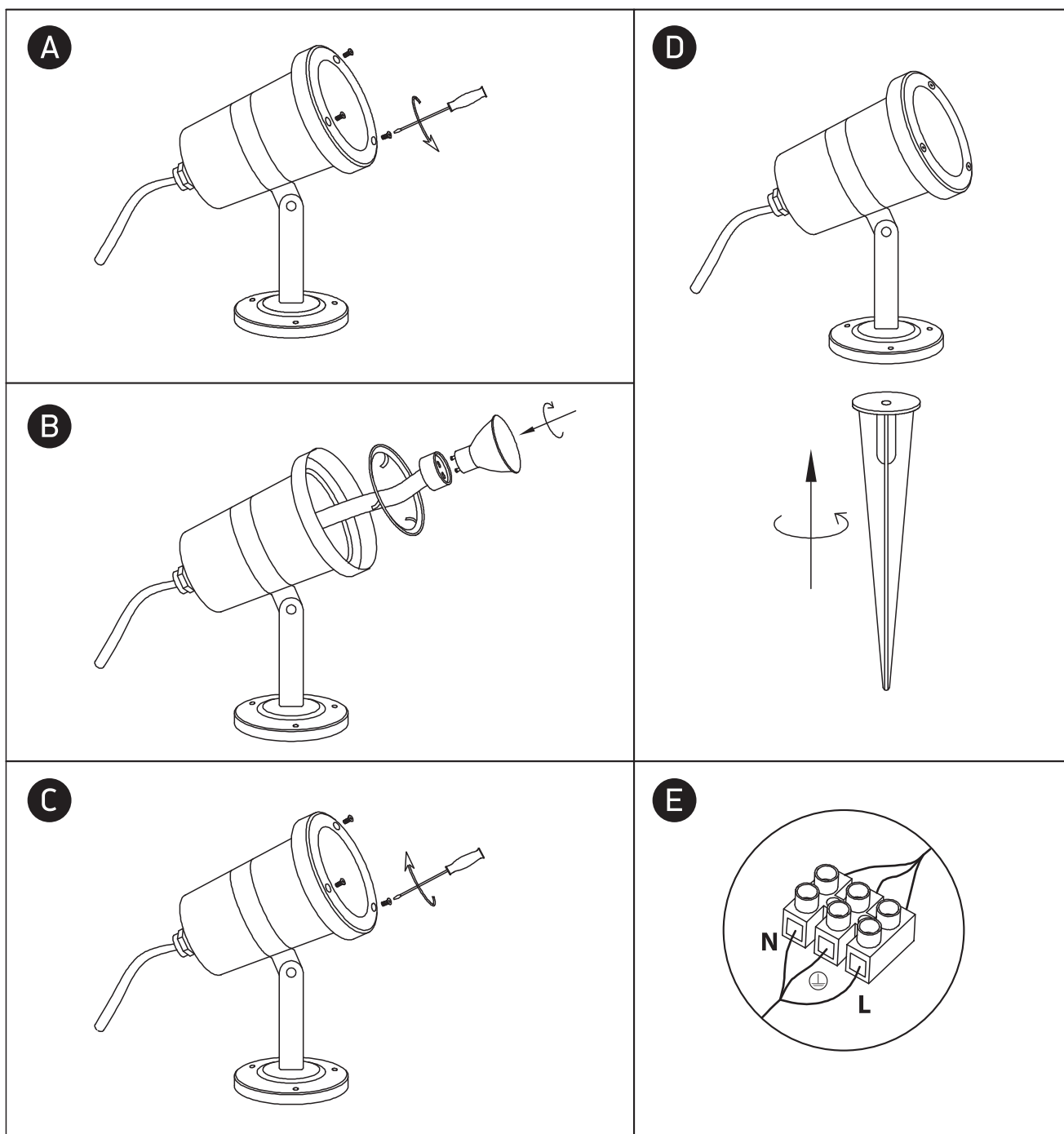


130mm

100-240V | MR16 | GU10 | 35W | IP65 | Stainless steel 316 | Adjustable

Supplied with base & spike

one
LIGHT



Warnings:

1. Make sure that the product is installed properly before connecting to electricity.
2. Do not cover the fitting.
3. Maintenance and installation should only be carried out by a professional electrician.