

# Specification

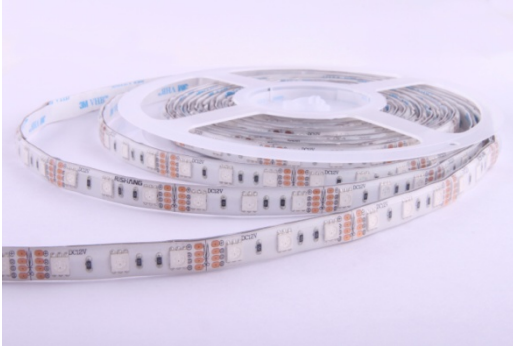
Prepared	Checked	Approved	Accepted	Confirmed	Approved

**CE**   **RoHS**   **5050**  
SMD   **60**  
LEDs   **LED**  
**Strip**   **DC**  
**12V**   **IP**  
**65**   **3**  
Years

**Model:** ○ RN6060AQ

5000\*10, 300pcs, 5050 SMD LEDs, silica gel injected series, constant voltage 12Vdc, RGB LED flexible strip

**Picture:**



**Features:**

- 5050 SMD LEDs mounted
- Can be cut at the printed marks;
- Certification: CE, RoHS.

**Applications:**

- Suitable for cover and contour lighting etc, in KTV, hotel, shopping mall, home, cabinet and so on.

**Warranty:**

- 3 years or 13,000 hours, whichever comes first.

**Optical and Electrical Parameters:**

P/N	LED Color	CCT (K) WL (nm)	CRI	SDCM	Beam Angle (°)	Luminous Flux (lm/m)	Luminous Efficacy (lm/w)	Working voltage (VDC)	Working current(mA)		Power (w)	
									1m[39.37in]	5m[196.85in]	1m[39.37in]	5m[196.85in]
RN6060AQ	Red	620-625	--	--	115	87	--	12	1083	3750	13	45
RN6060AQ	Green	525-530	--	--	115	177	--	12	1083	3750	13	45
RN6060AQ	Blue	465-470	--	--	115	53	--	12	1083	3750	13	45

**Others:**

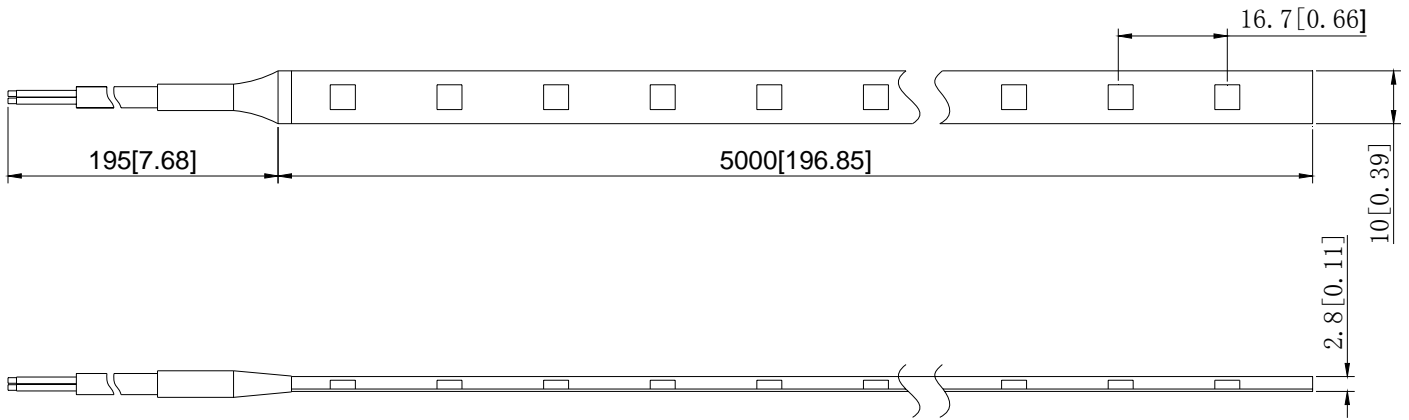
P/N	IP Grade	Operating Temp		Storage Temp		Standard length		Max. cascading length		LED Qty (pcs/m)	Weight	
		( °C )	( °F )	( °C )	( °F )	( m )	( inch )	( m )	( inch )		(g/m)	(lb/m)
RN6060AQ	IP65	-25~ +60	-13~ +140	-25~ +70	-13~ +158	5	196.85	5	196.85	60	/	/

Notes:

- (1) Testing environment temperature: 25±2°C [77±3.6°F];
- (2) The above data each single product could differ from the typical values. The data subject to change without prior notice;
- (3) The value of luminous flux is measured when the homogeneous light is lit;
- (4)Above CCT is derived from bare LED, which might be changed slightly due to refraction of silicone casing, thus for final CCT Please refer to actual samples
- (5)Bending radius ≥5cm, not suitable for channel letter application;
- (6) The above “--” represents that SDCM parameters do not need to be filled in.

Profile Drawings:

Unit: mm[inch]

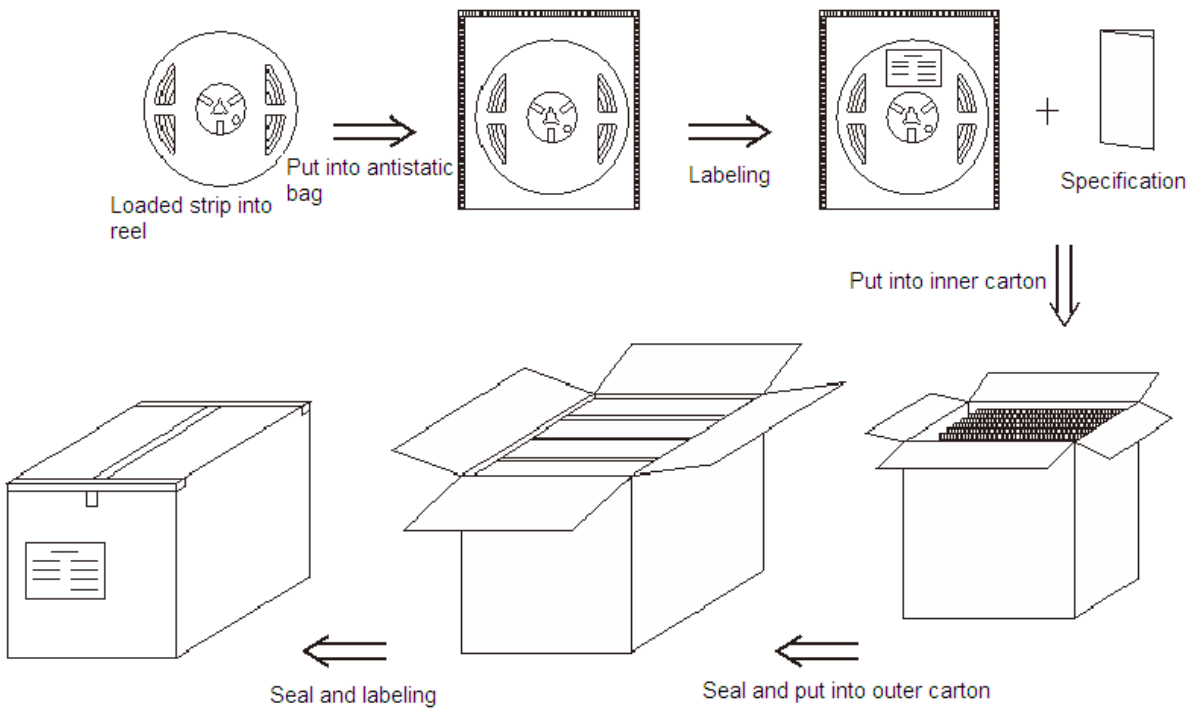


Packaging Information:

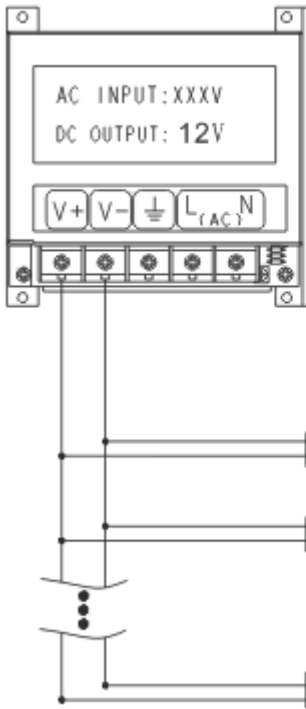
P/N	Qty (m/reel)	Qty (m/carton)	Total Qty (m)	Total weight		Outer carton size					
						length		width		height	
				(Kg)	(lb)	(mm)	(inch)	(mm)	(inch)	(mm)	(inch)
RN6060AQ	5	75	150	7.46	16.44	450	17.71	250	9.84	256	10.07

Notes: The actual packed quantity and weight may subject to change without prior notice.

Packaging Diagram:



Connection Instruction:



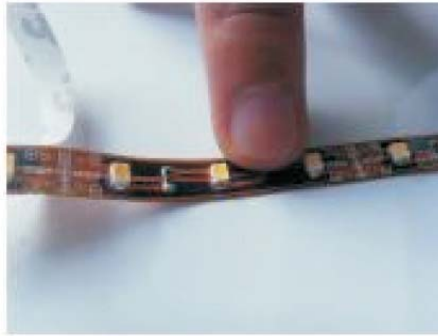
Notes: please make sure the "+" and "-" of the product's input are correctly connected to those of the power supply output.

Positive: red wire Negative: black wire

**Installation Steps & Cautions:**



○ Peel off the release paper



○ Stick them to the mounting surface



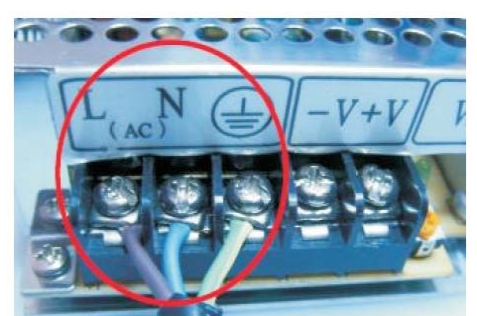
○ Mounted the snap spring.



○ Installation is complete



○ Connect the wires of power supply



○ Connect the wires of power adapter

No bending here

⦿ No bend the strip at the position of LED

⦿ No twisting the strip

⦿ No winding an object with a diameter <5cm.

## Troubleshooting:

Malfunctions	Possible Causes	Solutions
All LEDs don't work	1. The power supply did not connect to power grid.	Power on
	2. No electricity due to short-circuit of external power supply.	Remove the malfunction caused by short-circuit, power on again.
	3. The wires of strip light connect to power supply output reversely.	Check the connecting and ensure the wires are connected correctly.
Part of LEDs don't work	1. Part of power supplies do not have output.	Check the power supply system.
	2. Part of wires of strip light have malfunction.	
	3. Particular strip light connected reversely.	Correct connection
Brightness of LEDs is weak or uneven	1. Overloaded power supply;	Replace it with higher power supply
	2. The power loss of power circuit is huge or the power loss of each circuit existing big difference.	Ensure working voltage of strips is within $\pm 5\%V$ of rated voltage. 1. Shorten the length of wires between the first strip and power supply or replaced with wires with bigger diameter; 2. Ensure the cascading qty of string is less than or equal to the allowed maximum cascading qty, and each strip cascading qty is well-balanced.
	3. Exceed in qty of strip light in series	Lessen the cascading qty for strip and ensure the qty for each electrical circuit is within the maximum cascading qty.
LEDs are blinking	1. Poor contacted in the joints.	Find out and tackle malfunction immediately.
	2. Failures in power supply.	Replace power supply.

**Declaration:**

---

- ⊙ If the external flexible cable of light box is damaged, please replace it by its manufacturer or its service agent or qualified person to avoid a hazard.
- ⊙ The specific installation and cautions please refer to the user manual.
- ⊙ The given data in this specification is based on our standard product. There may be existed slight difference compared with actual products.
- ⊙ All Illustrations in this specification are for reference only.
- ⊙ This product is subject to change or modify without prior notice.
- ⊙ RISHANG OPTOELECTRONICS CO., LTD reserves the right of final explanation for this specification.

<End>

**Rishang Optoelectronics Co., Ltd** (stock code: 002654)

Add: Block 2, Hongfa jiateli High-Tech. Park Tangtou Ave., Shiyan, Bao'an Shenzhen  
Guang Dong, 518108, China

Tell: +86-755-36988588 E-mail: [info@ledlamps.com.cn](mailto:info@ledlamps.com.cn)

Website: [www.ledlamps.com.cn](http://www.ledlamps.com.cn)



Website



Wechat Accounts

